



# ADAMSON HOUSE

**DISCOVER THE LIFE AT TOWERS [VIDEO HERE](#)**

---

**FITTED AND FURNISHED  
GRADE A OFFICE SPACE - 2,012 SQ. FT.**

---

TOWERSLIFE.COM

# WHAT IS TOWERS?

---

LOCATED IN DIDBSURY,  
MANCHESTER – A VIBRANT,  
FRIENDLY, SAFE AND ACCESSIBLE  
OFFICE LOCATION

---

---

AN ESTABLISHED AND POPULAR  
GRADE A BUSINESS PARK IN AN  
EXTENSIVE PARKLAND SETTING

---

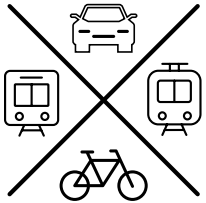
---

HOME TO 23 COMPANIES  
AND OVER 2,200 EMPLOYEES  
ACROSS 10 BUILDINGS

---



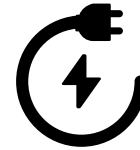
# WHY TOWERS?



**Easily accessible by a range of sustainable transport methods including rail, tram, bus and bike**



**High levels of on-site parking with ability to take further spaces in the adjacent cricket club**



**EV charging points**



**On-site Bean Coffee shop**



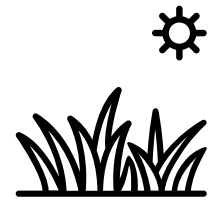
**On site showers and cycle hub**

**A**

**Modern Grade A office accommodation**



**Ongoing energy and carbon emissions reduction programme**



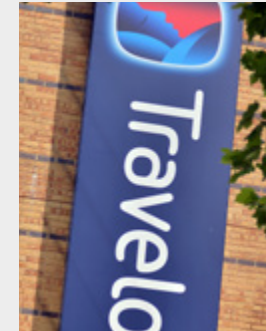
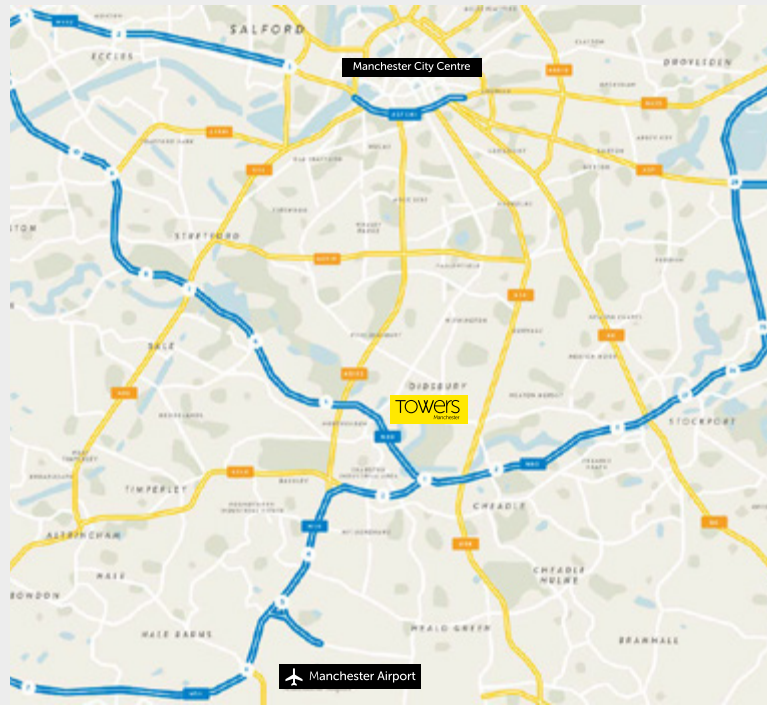
**Green parkland campus setting**





# Perfectly Positioned


THE PARK IS EXCELLENTLY LOCATED FOR RAPID ACCESS TO THE CITY CENTRE, MOTORWAY NETWORK AND THE AIRPORT.


Located next to affluent Didsbury, 6 miles from the City Centre and 10 minutes from the Airport, Towers is perfectly located for commuting on foot, by bike, by public transport (Metrolink and train) and by car.



 **East Didsbury**  
8 minutes walk

 **East Didsbury**  
7 minutes walk

 **M60 (J1)**  
7 minutes drive

 **M56 (J1)**  
10 minutes drive

 **Manchester Airport**  
10 minutes drive





# In a Great Location

TOWERS IS NOT A TYPICAL WORKING ENVIRONMENT. IT IS HOME TO OVER 2000 EMPLOYEES IN MODERN EFFICIENT BUILDINGS AND SET IN A BEAUTIFULLY LANDSCAPED ENVIRONMENT. ALL WITHIN WALKING DISTANCE OF ONE OF SOUTH MANCHESTER'S MOST AFFLUENT RESIDENTIAL AND LIFESTYLE NEIGHBOURHOODS.

Didsbury Village  
0.5 miles

Parrs Wood  
Entertainment Centre  
0.4 miles

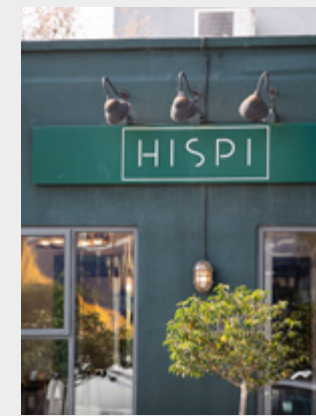
Manchester City Centre  
6 miles

Cheadle  
2 miles

Wilmslow  
7.5 miles

Whether you're looking for restaurants, bars, hair salons, florists or the cinema, the Didsbury area has it all. It is also home to some of the city's best housing along Barlow Moor Road between Princess Parkway and Wilmslow Road, a lovely place just to pop to or stay a little longer and enjoy everything it has to offer.

Here at Towers, we like to look after our occupiers and offer free, daily fitness classes. These include HIIT, Yoga, Metafit and Abs Blast, Boxfit and Pilates. We shake up the classes every 12 weeks, so keep an eye out for whats available. Classes held on site are for occupiers only and bookable via our portal.





# WITH A THRIVING CULTURE

KENNEDY WILSON HAVE INVESTED IN THE TOWERS LIFE PORTAL TO DELIVER AN ENGAGING PLATFORM FOR OCCUPIERS WORKING AT TOWERS. FROM FOOD AND DRINKS AND FITNESS CLASSES TO EXCLUSIVE EVENTS AND DISCOUNTS, THE TOWERS LIFE PORTAL AND APP ENABLES OCCUPIERS ON-SITE TO ENJOY THE WIDE RANGE OF BENEFITS AVAILABLE WORKING AT TOWERS.



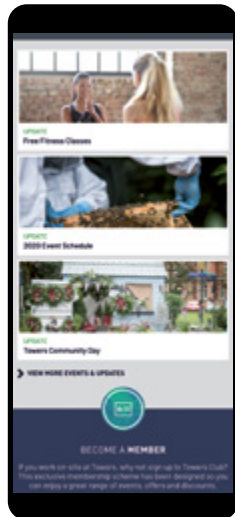
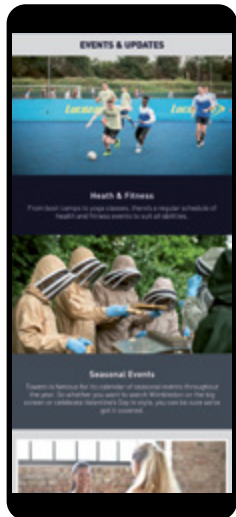
ESG focussed events



Three weekly wellness classes, plus regular social events, street food pop-ups and markets



Fully integrated Bean Coffee amenity on site



## App Portal Stats:

- **80% Employees Registered**
- **90% Active Users**
- **76 events held in 2023**
- **Over 85% of occupiers are engaged with the app (of 1,940 occupiers)**

**93%**

**Customer Satisfaction Score**

**+56**

**Net Promoter Score**



# AND IN GOOD COMPANY

"Towers' location has continued to **serve our business extremely well**, being so well positioned **close to Manchester Airport** (important to our business!) and **Manchester City Centre**."

British Airways



"The decision to take space at Towers was based on the **excellent specification and size of the office space**, as well as the sense of community within the park and the **excellent environment** it will provide for our team. We're very excited about the move here and **the positive impact** it will have on our business."

Andy Matthews, CFO at Conferma



Honeywell



Greenergy



- |                     |                   |
|---------------------|-------------------|
| 1 Scotscroft        | 6 Pioneer House   |
| 2 Ocean House       | 7 Crescent House  |
| 3 Worthington House | 8 Specturm        |
| 4 The Lodge         | 9 Adamson House   |
| 5 Pavilion          | 10 Kingston House |



# ADAMSON HOUSE





# SPECIFICATION

ADAMSON HOUSE HAS UNDERGONE A FULL GRADE-A REFURBISHMENT WITH ALL THE HIGH SPECIFICATION COMMUNAL AREAS AND AMENITY SPACE YOUR BUSINESS NEEDS TO THRIVE.



Refurbished  
reception area



Glazed automatic  
entrance doors



VRF air  
conditioning system



2× Refurbished  
8-person lift car



Refurbished  
male, female &  
disabled WC's



Shower and  
changing facilities



Telcom  
pre-connected



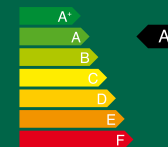
Metal tile  
suspended ceiling  
with LED lighting



Full access  
raised floors



ESG Credentials



EPC A



Active score Gold







# SECOND FLOOR

**2,012 SQ FT**

24 x Fixed desks

Reception and soft seating space

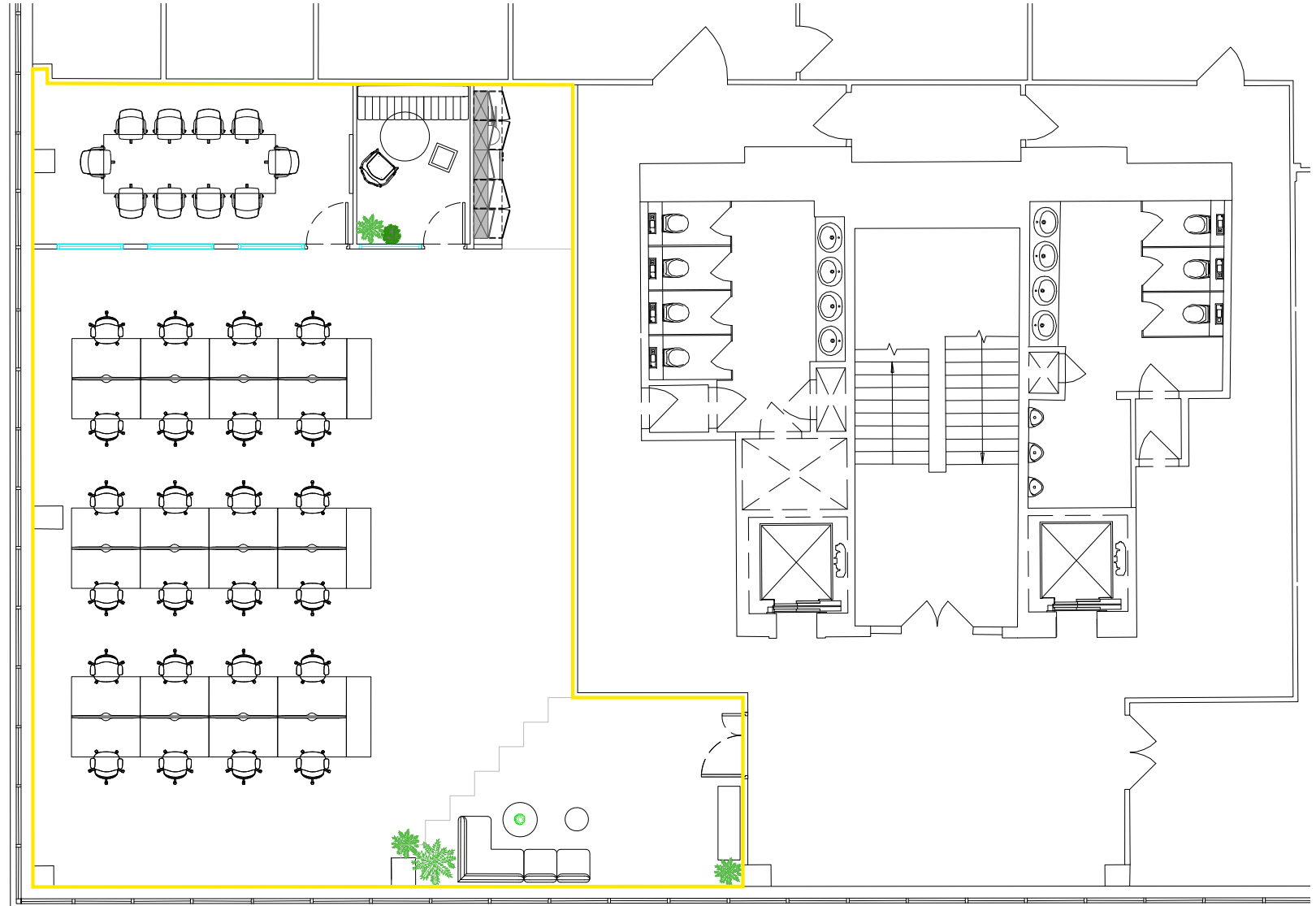
10 x person boardroom

4 x person meeting room

Newly fitted kitchen

Green planters throughout

Telecom network pre-connected



# GET IN TOUCH

**Edwards.**



Richard Dinsdale  
richard@edwardsandco.com  
0161 837 1384

Dominic Pozzoni  
dominic.pozzoni@colliers.com  
0161 831 3351



Mark Garner  
mark.garner@cbre.com  
0161 233 5437

**TOWERSLIFE.COM**

PROPERTY MISDESCRIPTIONS ACT 1991

Edwards & Co, Colliers and CBRE for themselves and for the Vendors or Lessors of this property whose Agents they are, give notice that: 1. These particulars do not constitute any part of an offer or contract. 2. The information contained within these Particulars has been checked and unless otherwise stated is believed to be materially correct at the date of publication. After publication circumstances may change beyond our control, but prospective purchasers or Tenants will be informed of any significant changes as soon as possible. 3. All descriptions, statements, dimensions, references to condition and permissions for use and occupation or other details are given in good faith and are believed to be correct, but are made without responsibility and should not be relied upon as representations of fact. Intending Purchasers or Tenants should satisfy themselves as to their correctness before entering into a legal contract. 4. All plant, machinery, equipment, services and fixtures and fittings referred to in these particulars were present at the date of publication. However, they have not been tested and therefore we give absolutely no warranty as to their condition or operation. 5. Unless otherwise stated all prices, rents and other charges are quoted exclusive of VAT. Any intending Purchaser or Tenant must satisfy themselves independently as to the incidence of VAT in respect of any transaction. 6. The Vendors or Lessors do not make or give nor does the Agent nor any person in their employment, have any authority to make or give any representation or warranty whatsoever in relation to this property. **March 2024.**