

26-28
**HILTON
HOUSE**
MCR

Designed and built by controversial architect Richard Seifert who was shaping the London skyline, this landmark of Manchester's Northern Quarter had remained untouched since its construction in the 1960s.

**Fully fitted
4,155 sq ft open plan
workspace available**

**Where
Community
Meets Excellence**

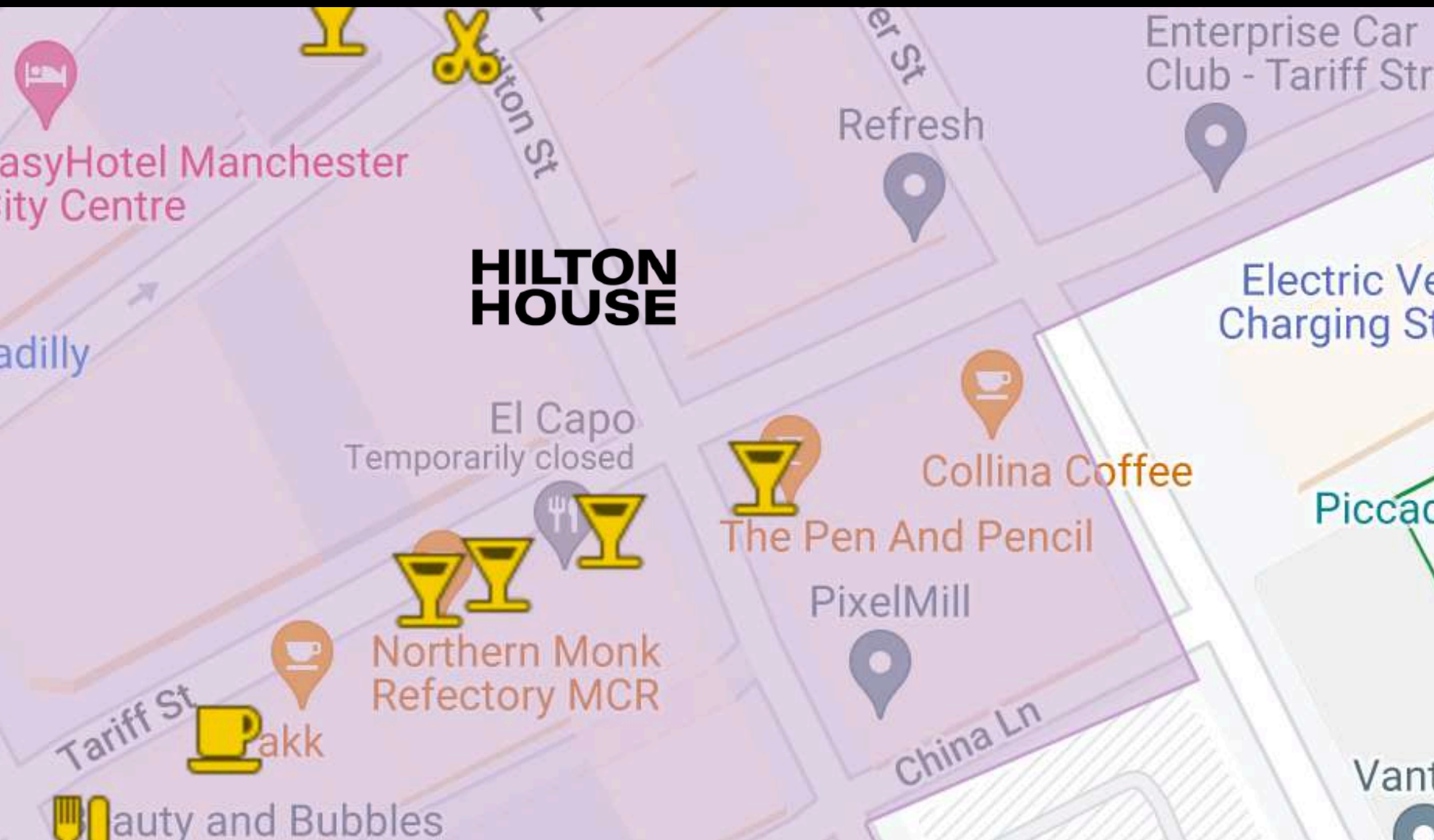


Welcome to Hilton House

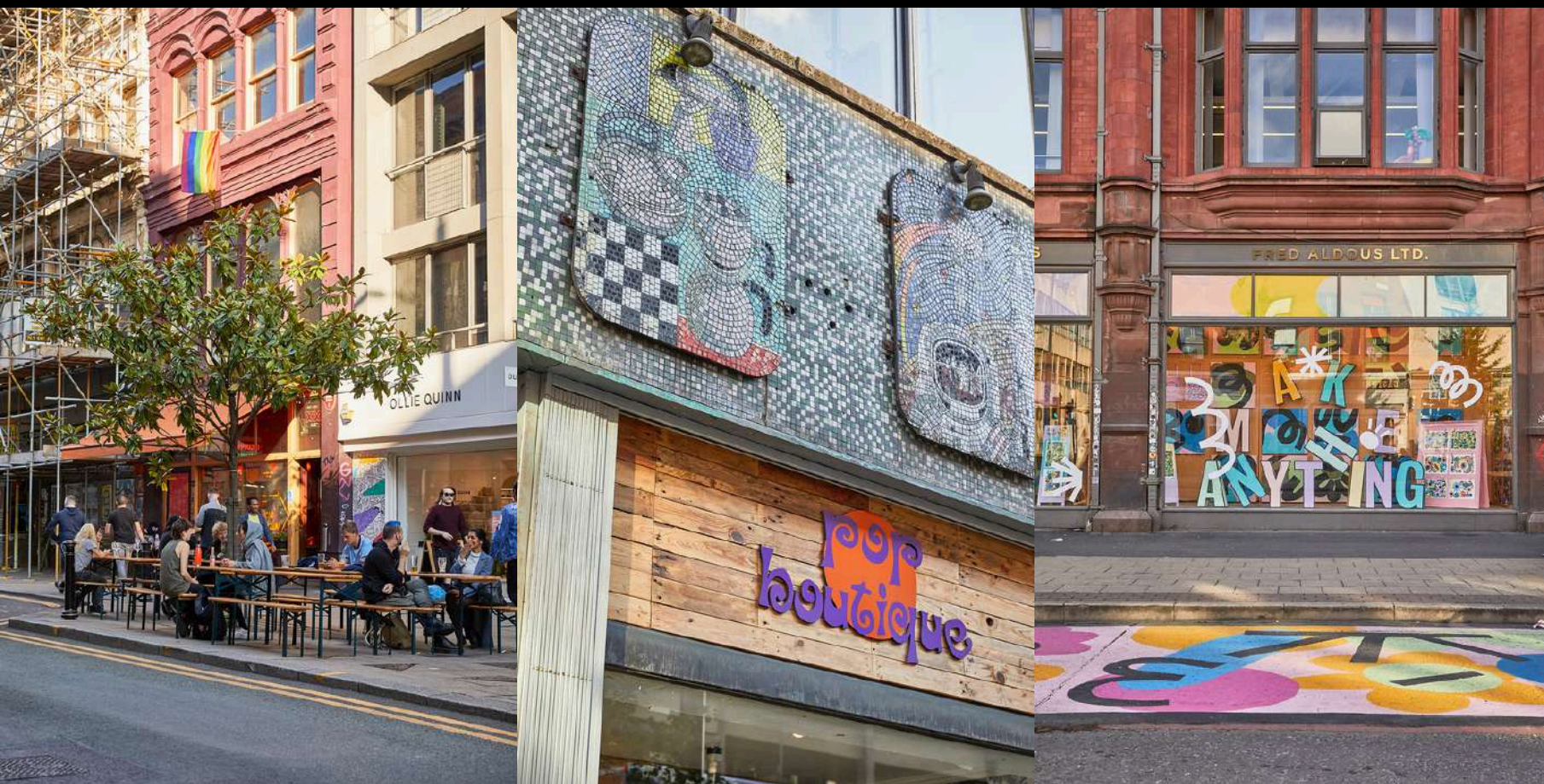
Location

Discover the rich heritage and prime location of Hilton House. Situated in the vibrant Northern Quarter of Manchester, this iconic building has a storied past and stands as a testament to the city's cultural legacy.





Convenience at your doorstep



Enjoy the advantages of Hilton House's central location.

Surrounded by artisan coffee shops, trendy bars, and eclectic restaurants, you'll experience the dynamic energy of the Northern Quarter.

With excellent access to public transportation, commuting and exploring the city has never been easier.



Not

Your

Ordinary

Office

Building



**MCRHOUSE
WORKHOUSE
COFFEEHOUSE
ARTHOUSE
PLAYHOUSE
DESIGNHOUSE**



 grayce

First Floor
5,705 sq ft

Hilton House Residents



Softwire

Second Floor
4,758 sq ft

Hilton House Residents



Hawkins\ Brown

Third Floor
4,155 sq ft

Hilton House Residents



**FEEL
GOOD
CLUB.**

Ground Floor
4,378 sq ft

Hilton House Residents



Basement Floor
4,099 sq ft

Hilton House Residents

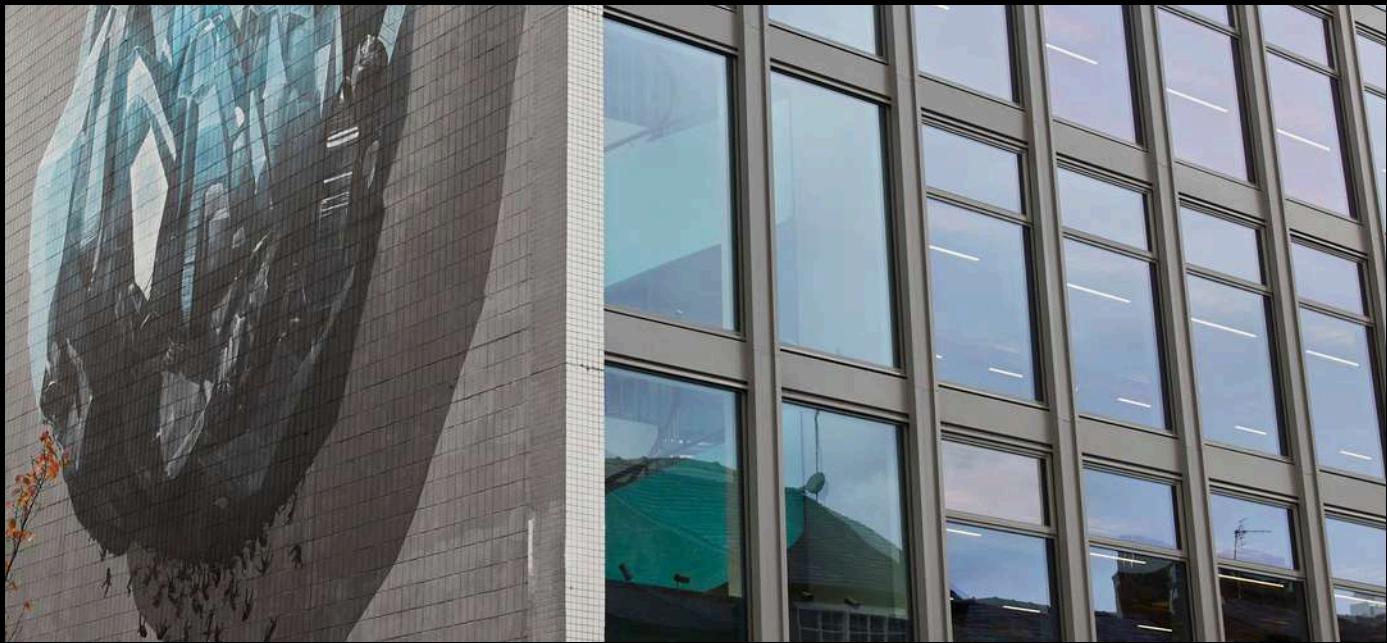
Building Community Together



At Hilton House, we embrace diversity, collaboration, and inclusivity.

Our ethos fosters a sense of belonging and supports a community where everyone's voice is heard and valued. We believe that by celebrating our differences, we create an environment that thrives on innovation and mutual respect.





Distinctive Building Features

Immerse yourself in the remarkable architecture and design of Hilton House. From its striking façade to its contemporary interior, every detail has been meticulously crafted to provide a modern and inspiring work environment.



10GB broadband

The fastest in the city



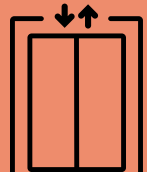
Cycle storage

Secure storage and ramp entrance



Concierge reception

Available from 7:30 - 15:30



Double lift

Large enough to hold 14 people



Original feature

Parquet floor and terracotta ceiling



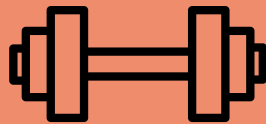
Unisex showers

Two showers and a disabled toilet in the basement



Vanity area

Large vanity mirror with two hair dryers



Gym

Boutique gym in the basement



Aircon

VRF heating/cooling



LED lights

Sensor lights



Fourth Floor
4,155 sq ft

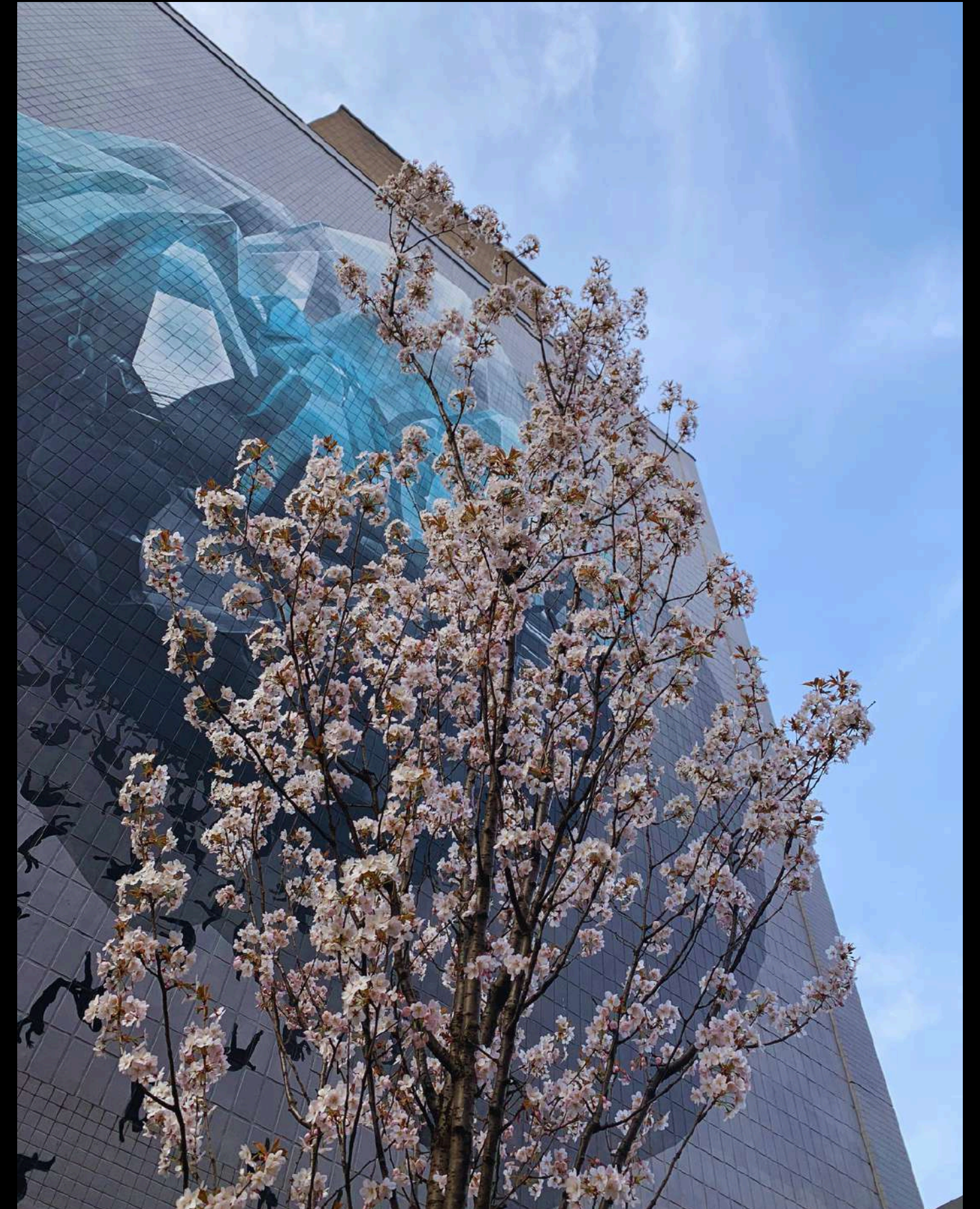
Discover the perfect workspace for your needs at Hilton House. Our fourth floor office space is tailored to accommodate businesses that need ample space for their team.

- ▮ 4,155 sq ft
- ▮ 1 private office
- ▮ 2 large meeting/board rooms
- ▮ 37 desks with pedestals
- ▮ kitchen and dining area
- ▮ collaboration space
- ▮ Breakout area

Available Plug & Play Work Space

Helping the environment

- ♻️ Refurbished development
- ♻️ Sustainable partner contractors
- ♻️ Good energy management practice
- ♻️ Regular sustainability group meeting
- ♻️ 0% waste directed to landfill
- ♻️ EPC Rating B





Contact Us!

Contact our leasing team for more information and to schedule a personalized tour of the available office spaces.

Ellis Michael

Commercial Asset Manager, CERT Property

+44 (0) 7726 432 450
ellismichael@certproperty.co.uk
certproperty.co.uk

Richard Dinsdale

Edwards.

rdinsdale@edwardsprop.com
DD: 0161 837 1384
M: 07801 294 770