

# HOLLINS CHAMBERS

---

Manchester  
M3 3BA

THE ART OF  
FINDING  
THE RIGHT  
OFFICE SPACE

1,870 - 3,968 sq ft  
of Boutique Office Space

TO LET







THE ART OF  
BEING IN THE HEART  
OF THE CITY



# Boutique Office Space in the Heart of Manchester

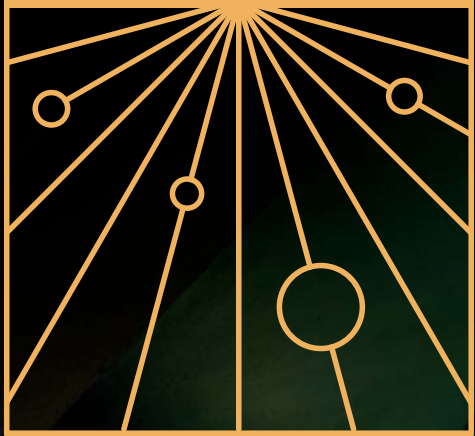
As one of Europe's fastest-growing cities, Manchester has undergone rapid transformation over the past decade, and this evolution shows no signs of slowing down.

The city's skyline has been reshaped, reflecting its dynamic growth and modernisation. Among the vibrant new additions to the skyline is the beautifully restored Hollins Chambers, a fascinating piece of Manchester's architectural history.



## An Historic Gem in a Modern Metropolis

Dating back to 1925, Hollins Chambers is located on Bridge Street in the heart of Manchester's Central Business District. This prime location, places it just a short walk from prominent neighbourhoods such as Spinningfields and King Street, making it an ideal location for businesses seeking a prestigious address.



# THE ART OF CREATING THE RIGHT IMPRESSION



## Contemporary Comforts in a Classic Setting

The building has been refurbished to a high standard, seamlessly blending its historical charm with modern amenities.

The refurbishment has revitalised the building, aligning it with contemporary office occupier requirements. The updated specification and interior layout cater to today's business needs, ensuring a productive and stylish working environment.

Hollins Chambers offers a unique combination of historic elegance and modern functionality, making it a standout option for those looking to establish their office in one of Manchester's most sought-after locations.





# THE ART OF SURROUNDING YOURSELF WITH GOOD COMPANY



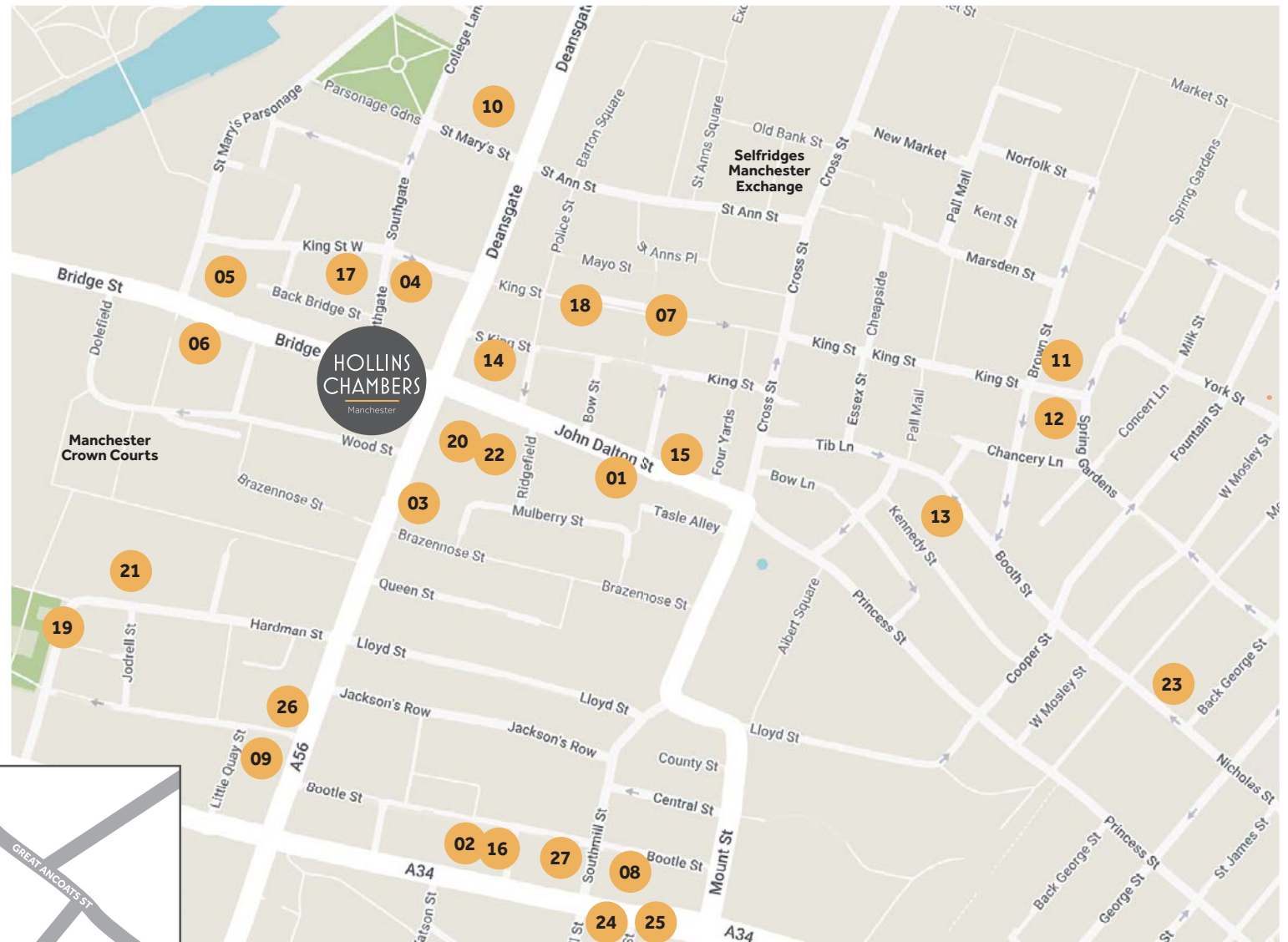
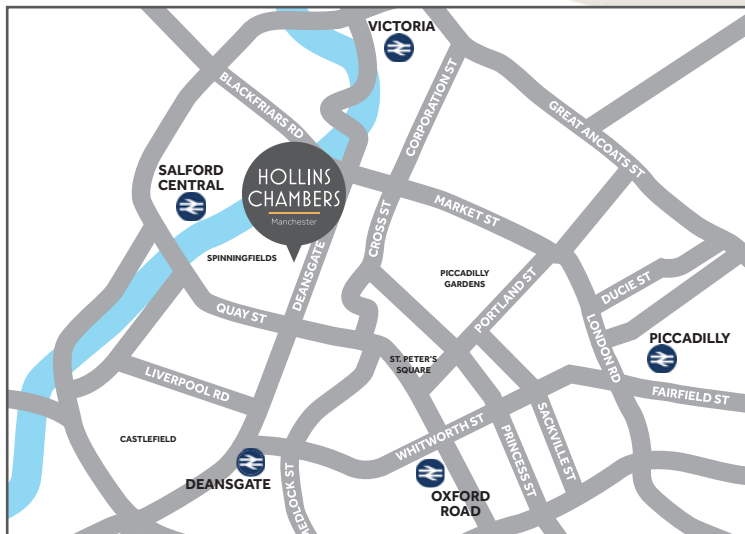


## Transport Links

Ideally situated in the heart of Manchester's Business District, just off Deansgate, Hollins Chambers is within minutes of Manchester's main transport links and easily accessible from the motorway and main arterial routes.

The surrounding neighborhood is vibrant, with King Street, Spinningfields and Deansgate just a 2-minute walk away. These areas feature high-end shops, cafés, bars, and restaurants, including popular spots like The Ivy and Sexy Fish.

Of course, it is also close to all the other fantastic attractions that Manchester has to offer, with arts, culture, nightlife, shopping, high-end eateries, and conference facilities right on the doorstep.



## Local Amenities

- |                     |                           |                 |                       |
|---------------------|---------------------------|-----------------|-----------------------|
| 1. 92 DEGREES       | 8. EZRA & GIL             | 14. LA VINA     | 21. PURE GYM          |
| 2. ALBERT'S SCHLOSS | 9. FEDERAL                | 15. MY THAI     | 22. TRIB3 MANCHESTER  |
| 3. BOX              | 10. GAUCHO                | 16. RUDY'S      | 23. LIFESTYLE FITNESS |
| 4. CAPRI            | 11. GRAND PACIFIC         | 17. SAN CARLO   | 24. EXHIBITION        |
| 5. CRAZY PEDROS     | 12. HOTEL GOTHAM          | 18. TAST CATALA | 25. HAUNT MCR         |
| 6. DISHOOM          | 13. KING STREET TOWNHOUSE | 19. THE IVY     | 26. HAWKSMOOR         |
| 7. EL GATO NEGRO    |                           | 20. YOTEL       | 27. BLACKLOCK         |

# The Building

Configured over 5 floors, each floor plate is equipped with all the amenities and technical infrastructure necessary to be self-contained.

The suites are available in either a full fitted 'plug & play' specification or CAT A+ including meeting rooms, fully fitted kitchen and self-contained WCs

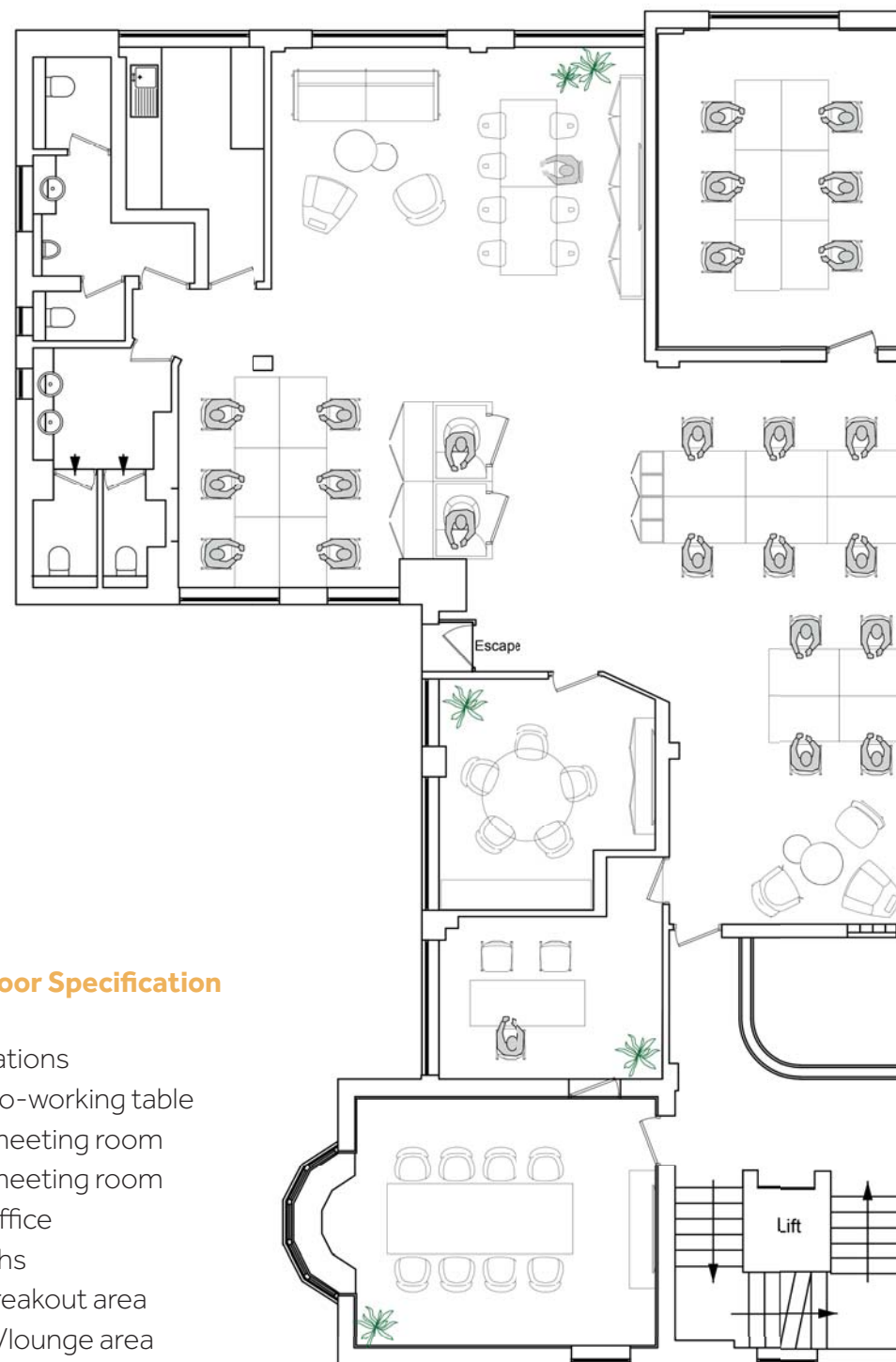
All of these spaces are designed with stunning architectural features, creating a grand and inspiring office environment.

<b>Basement</b>	LET
<b>Ground Floor</b>	LET
<b>Part 1st Floor</b>	LET
<b>Part 1st Floor</b>	1,870 sq ft
<b>2nd Floor</b>	2,098 sq ft
<b>3rd Floor</b>	LET

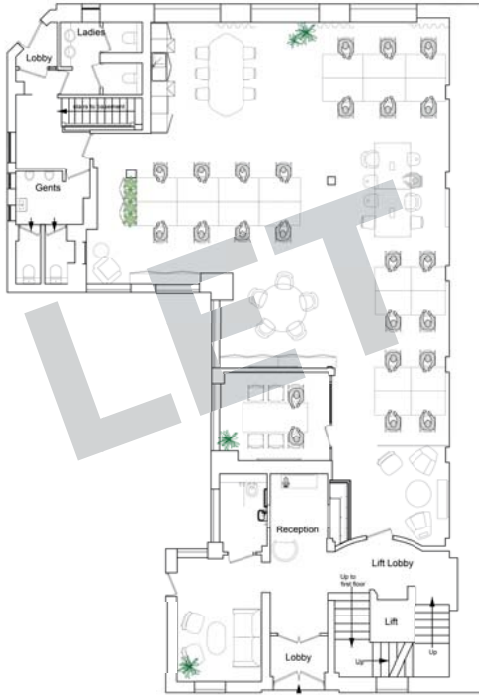


## Second Floor Specification

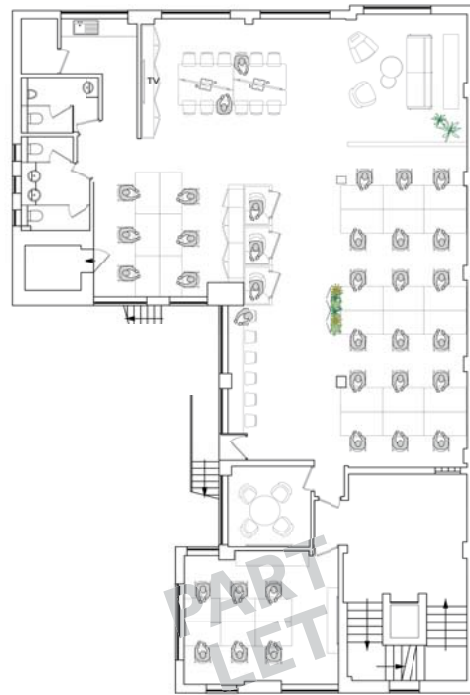
22 workstations  
 8 person co-working table  
 8 person meeting room  
 5 person meeting room  
 1 private office  
 2 call booths  
 Kitchen/breakout area  
 Reception/lounge area







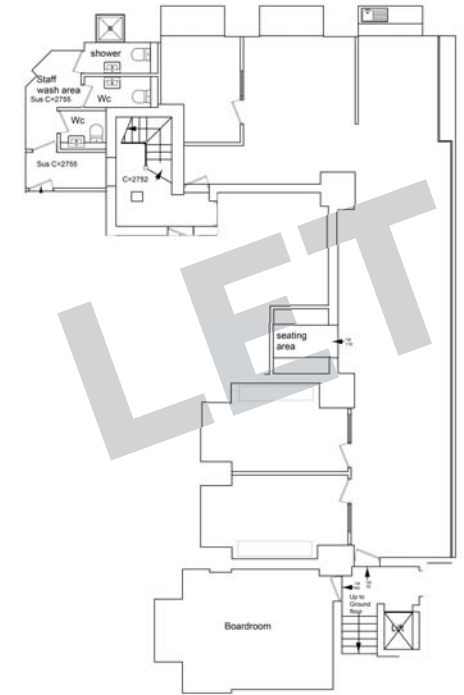
Ground Floor



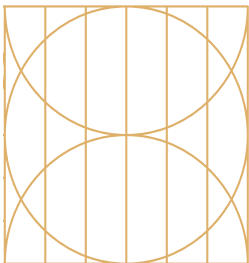
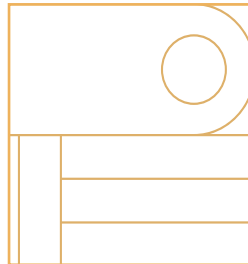
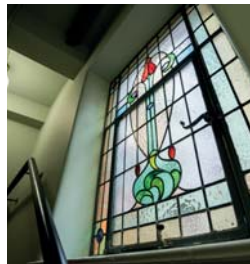
First Floor



Third Floor



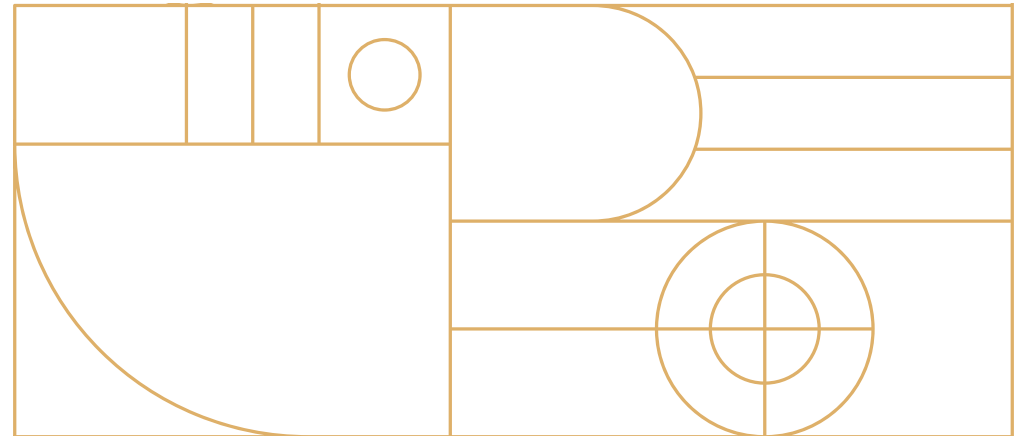
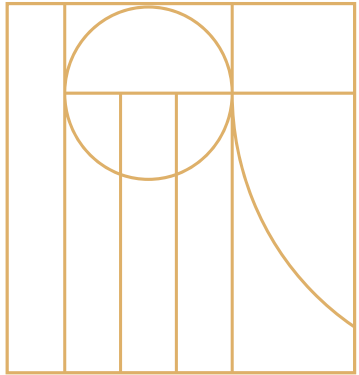
Basement



## FINAL TWO FLOORS REMAINING

# Building Specification

- Pendant LED lighting
- VRF heating/cooling
- Speeds up to 10Gbps available throughout the building
- Male/Female WC's on each Floor
- Character features
- Fitted kitchen and meeting room on each floor
- Fitted and furnished specification available at additional cost





## Business Rates

The occupier will be liable to pay business rates on the property. We advise you to check this with the local authority.

## Service Charge

The occupier will be liable to pay a contribution towards the service charge on the property. Full details can be provided by the letting agents.

## Terms

The property is available to lease on terms to be agreed with the letting agents.

## VAT

All figures are quoted exclusive of VAT at the prevailing rate.

## EPC

EPC - C (58)

# HOLLINS CHAMBERS

Manchester  
M3 3BA

[hollinschambers.co.uk](http://hollinschambers.co.uk)

Owned and managed by Taylor Estates (Cheshire) Ltd  
[www.taylorestates.com](http://www.taylorestates.com)

A development by Taylor Estates

Misrepresentation Act 1967. Unfair Contract Terms Act 1977 The Property Misdescriptions Act 1991. These particulars are issued without any responsibility on the part of the agent and are not to be construed as containing any representation or fact upon which any person is entitled to rely. Neither the agent nor any person in their employ has any authority to make or give any representation or warranty whatsoever in relation to the property. February 2026.

Contact Oliver Woodall  
[owoodall@edwardsprop.com](mailto:owoodall@edwardsprop.com)



Contact Oliver Luckman  
[oliver.luckman@savills.com](mailto:oliver.luckman@savills.com)

