

COMING SOON
Fully Furnished & Fitted Suites

BOUNDS × BUILDING

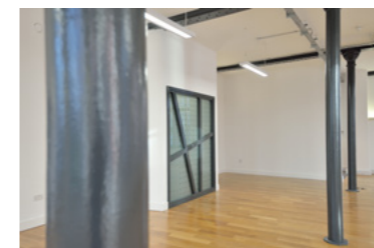
68 Sackville Street
Manchester, M1 3NJ



TO LET

HIGH QUALITY CONTEMPORARY OFFICE ACCOMMODATION

1,839 – 3,751 sq ft
(171 – 348 sq m)



✘ **The impressive Victorian office building, has undergone an extensive refurbishment program to provide New York loft style space, offering high quality contemporary and characterful office space, suitable for immediate occupation, overlooking Vimto Park.**

Requirements from 1,839 sq ft to 3,751 sq ft can be accommodated over first and third floors, arranged in a predominantly open plan configuration. Each floor benefits from male and female toilet facilities, shower, kitchen and lift access.



A STRIKING BUILDING

situated in a prominent position on Sackville Street

- ✕ The striking building is situated in a prominent position on Sackville Street, close to the junction with Whitworth Street and overlooking the UMIST Vimto Park. The surrounding area, including the Manchester University Campus, is considered one of the most cosmopolitan areas in the City offering occupiers a wide choice of amenities including cafes, bars, restaurants, shopping and leisure facilities nearby.

Sackville Street is located within close proximity of excellent public transport links including Piccadilly Gardens public transport interchange, Chorlton Street bus terminal and both Piccadilly and Oxford Road railway stations.





Key

- **Restaurants and bars**
 - 1 Esquires coffee shop
 - 2 Carluccios
 - 3 Chango's Burrito
 - 4 Philpotts/Pizza Express
 - 5 Dog Bowl
 - 6 Gorilla
 - 7 Upper Crust
 - 8 Pizza Express
 - 9 Ask Italian
 - 10 Grill on New York Street
 - 11 The Alchemist
 - 12 Giovanni's Deli
 - 13 Philpotts
 - 14 Starbucks
 - 15 Cafe Nero
 - 16 Zizzis
 - 17 Bella Italia
 - 18 Pret
 - 19 Wrap it Up
 - 20 China Town
 - 21 Tribeca
 - 22 Chopped
 - 23 Canal Street
 - 24 Peru Perdu
 - 25 Foundation Coffee
 - 26 O Sheas Irish Bar
- **Retail & Leisure**
 - 27 Market Street
 - 28 Manchester Arndale
 - 29 Northern Quarter
 - 30 Tesco Express
 - 31 Sainsburys
 - 32 JD Sports Gym
- **Hotels**
 - 33 Mecure, Piccadilly
 - 34 Britannia
 - 35 Malmaison
 - 36 DoubleTree by Hilton
 - 37 Holiday Inn
 - 38 Ibis Hotel
 - 39 Novotel
 - 40 Premier Inn
 - 41 Ibis
 - 42 Kimpton Clocktower Hotel



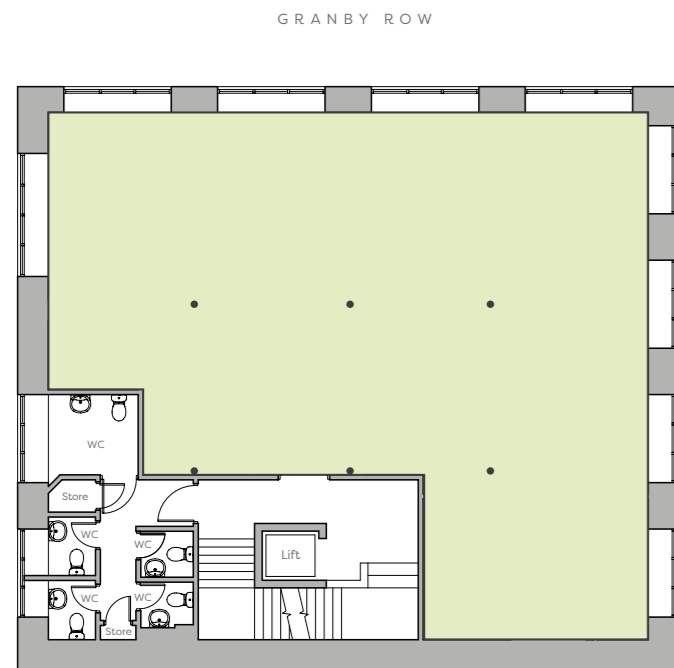
IDEALLY LOCATED
with close proximity of
excellent public transport links



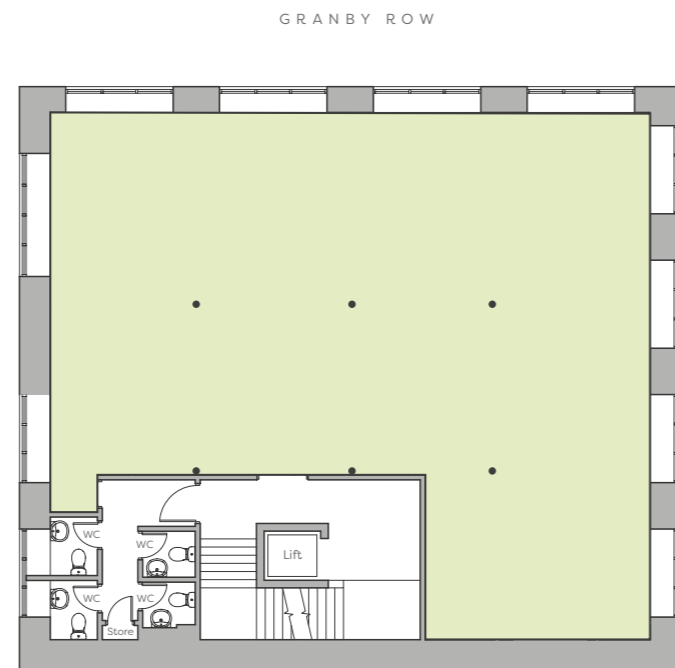
An excellent specification in a
**NEW YORK LOFT
STYLE SPACE**



- ✕ • Boutique style entrance
- Exposed cast iron columns and beams
- Key fob entry/security system
- 24 hour access, 7 days a week
- Male and female WCs and on each floor
- Showers on each floor
- High quality wooden flooring
- Feature lighting
- Excellent floor to ceiling height
- 6 person passenger lift
- New York loft style windows throughout
- Superb natural light
- On site car parking
- Kitchen area incorporated within suites



✗ FLOOR 1 - 1,839 SQ FT



✗ FLOOR 3 - 1,912 SQ FT



EXPOSED CAST IRON COLUMNS & BEAMS

BOUNDS × BUILDING

68 Sackville Street
Manchester, M1 3NJ

For further information and viewings
please contact the agent.

Joe Parker

E Joe.Parker@cushwake.com
T 0161 235 8968
M 07717 356 582

Richard Dinsdale

E rdinsdale@edwardsprop.com
T 0161 833 9991
M 07801 294 770



Misrepresentation Act 1967. Unfair Contract Terms Act 1977 The Property Misdescriptions Act 1991. These particulars are issued without any responsibility on the part of the agent and are not to be construed as containing any representation or fact upon which any person is entitled to rely. Neither the agent nor any person in their employ has any authority to make or give any representation or warranty whatsoever in relation to the property. October 2024.
RB&Co 0161 833 0555. www.richardbarber.co.uk