

**55 KING STREET**

MANCHESTER





## OVERVIEW

# bringing back individuality to the workspace



VRF A/C



Building  
Concierge



LED Lighting



Cycle Hub



MVHR



EPC A (Floors 1-5)  
EPC B (Floors 6)



100% Renewable  
Electricity



Existing Structure  
Retained



Fitted & Furnished  
Options



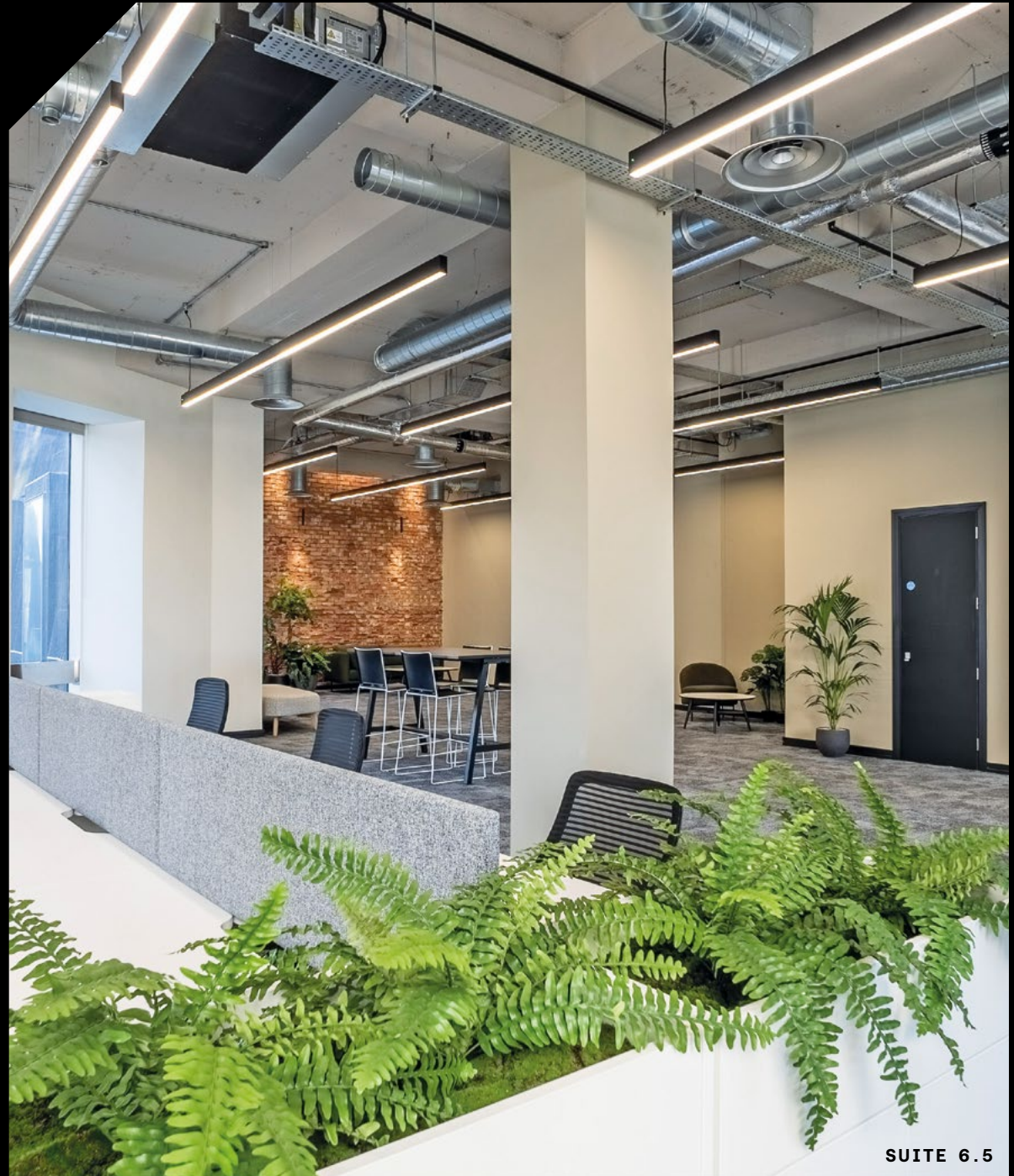
24/7 Secure  
Card Access



Meeting Room  
Access



Zero Waste  
to Landfill



SUITE 6.5



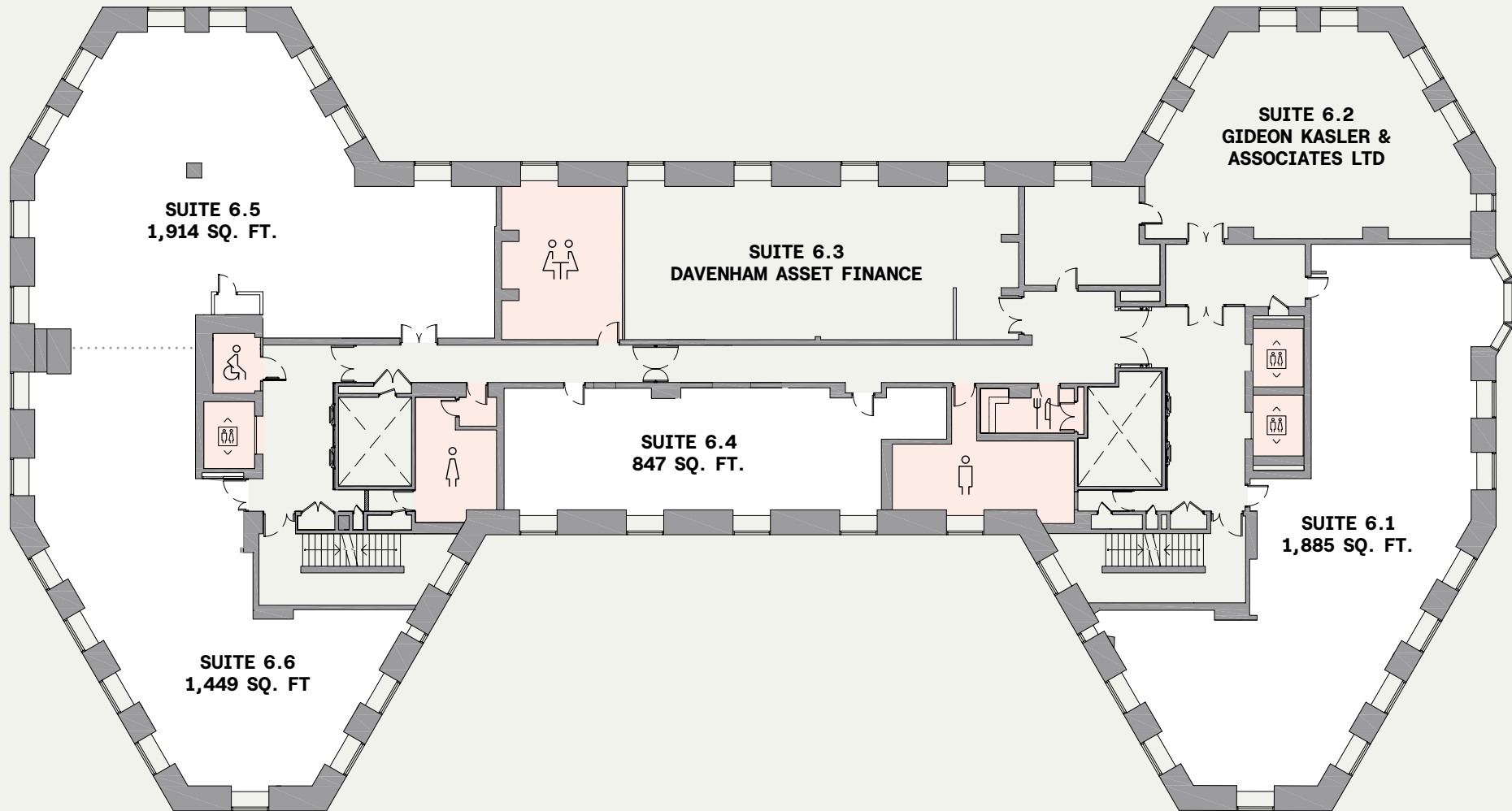
Fitted & furnished workspace  
12 - 30 Persons



SUITE 6.1

# 6th Floor

## SMALL SUITES



**SUITE 6.1**  
1,885 SQ. FT.  
AVAILABLE

**SUITE 6.4**  
847 SQ. FT.  
AVAILABLE

**SUITE 6.5**  
1,914 SQ. FT.  
AVAILABLE

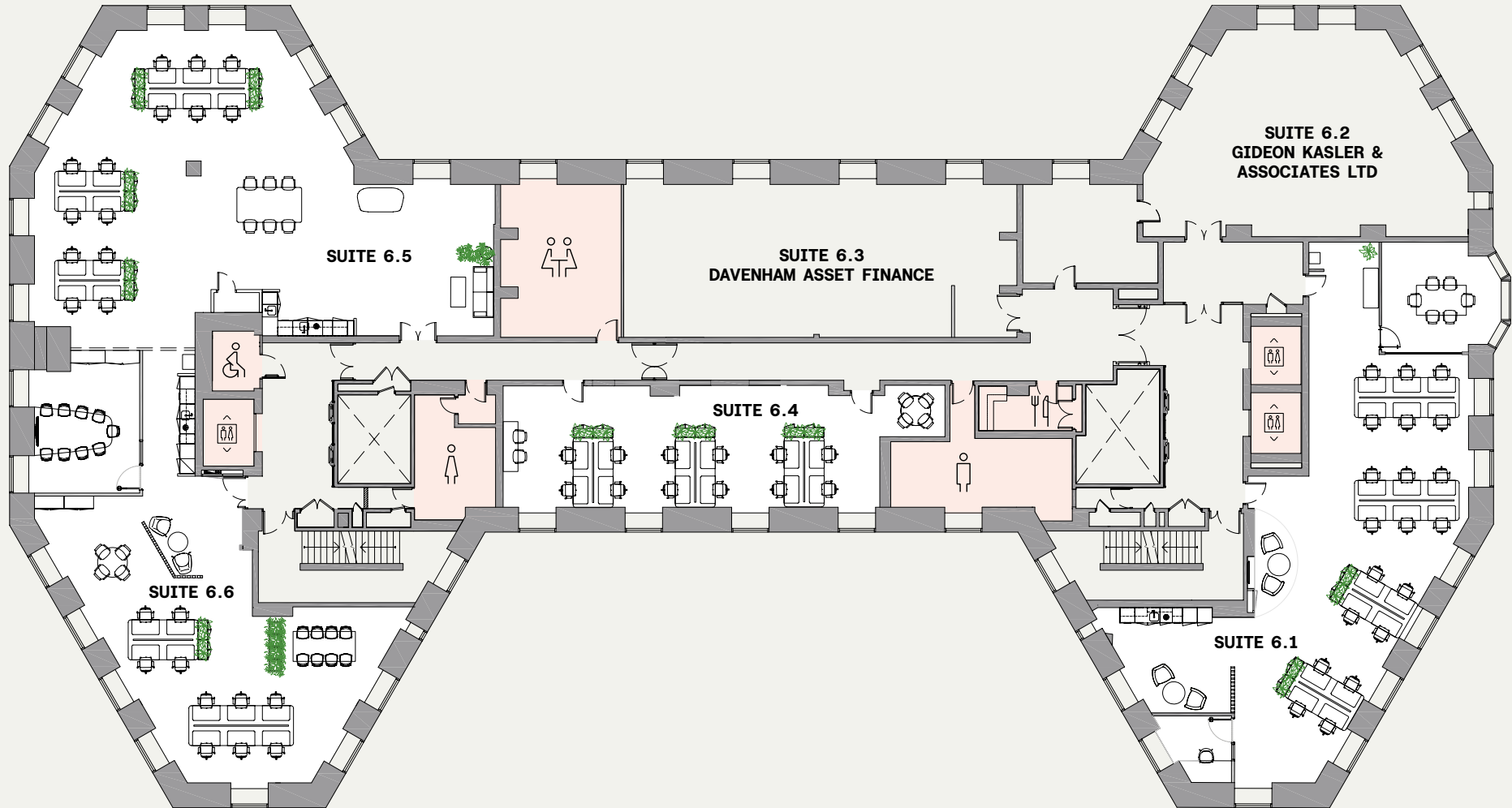
**SUITE 6.6**  
1,449 SQ. FT.  
AVAILABLE

6.5 and 6.6 available  
as an open plan suite  
of 3,373 SQ. FT.



# 6th Floor

## SPACE PLAN



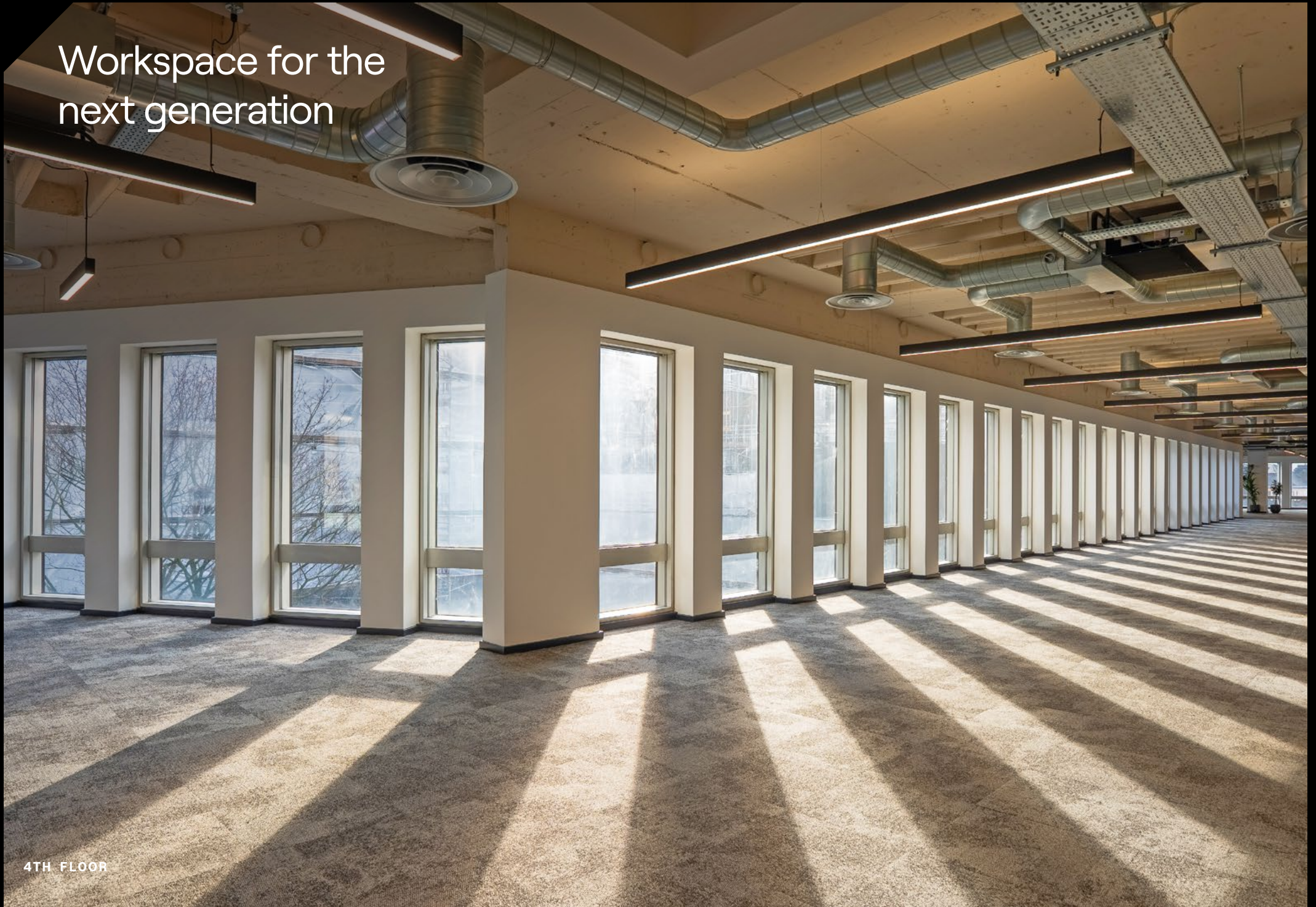


SUITE 6.4



Workspace for the  
next generation

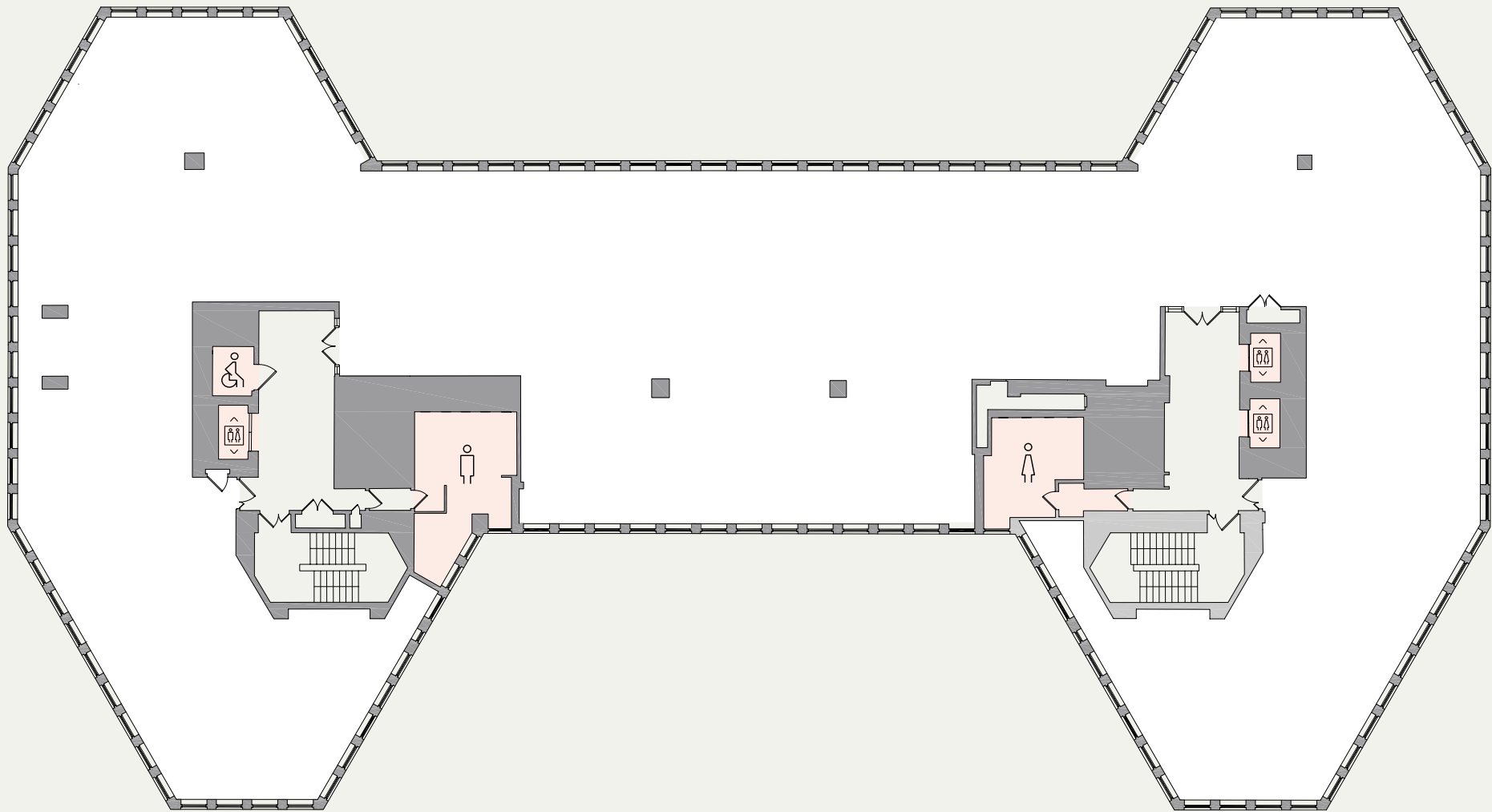
4TH FLOOR





# 4th Floor

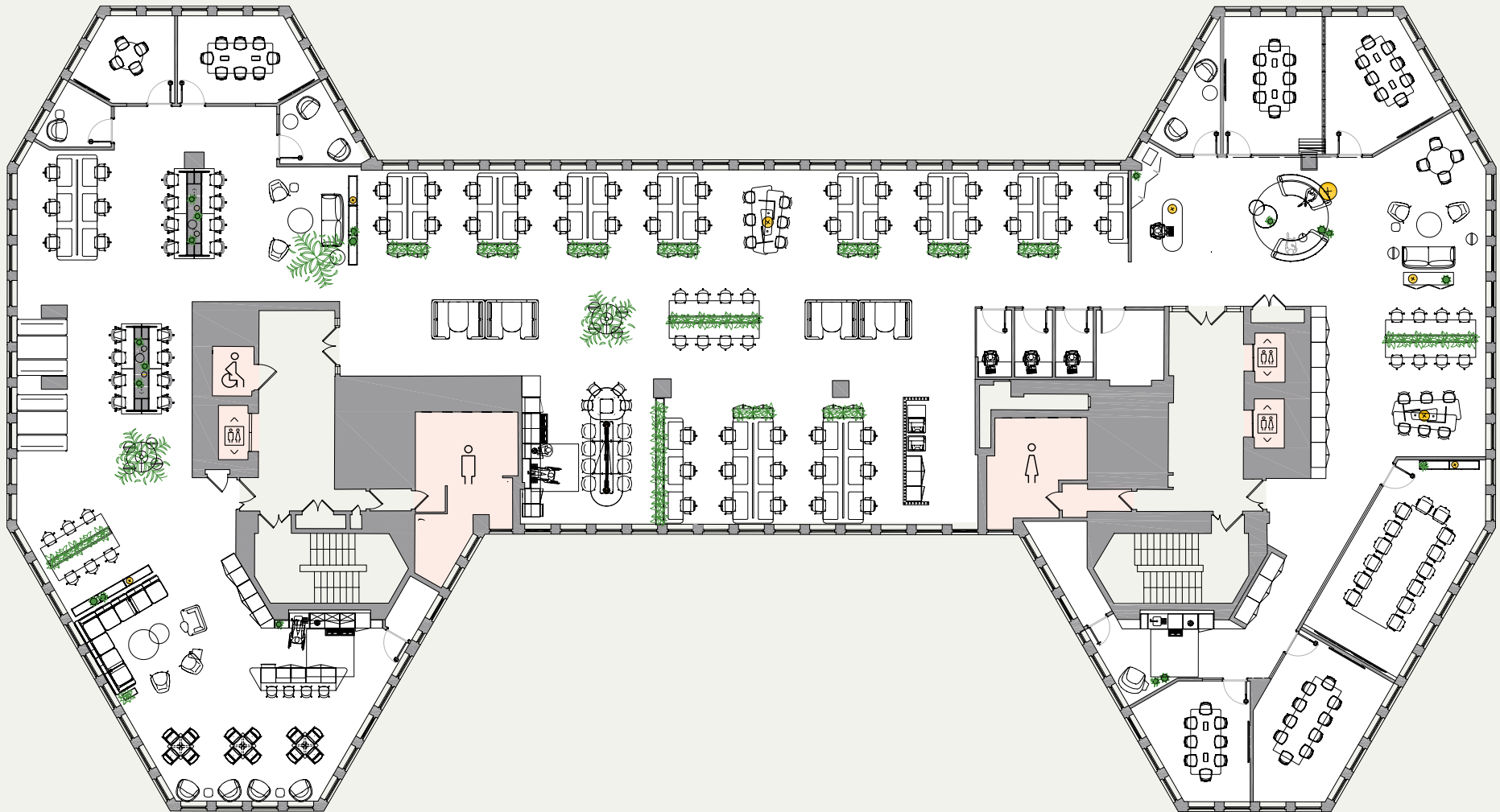
WHOLE FLOOR



Whole floor  
10,540 sq.ft.  
AVAILABLE

# Relaxed density

## SPACE PLAN

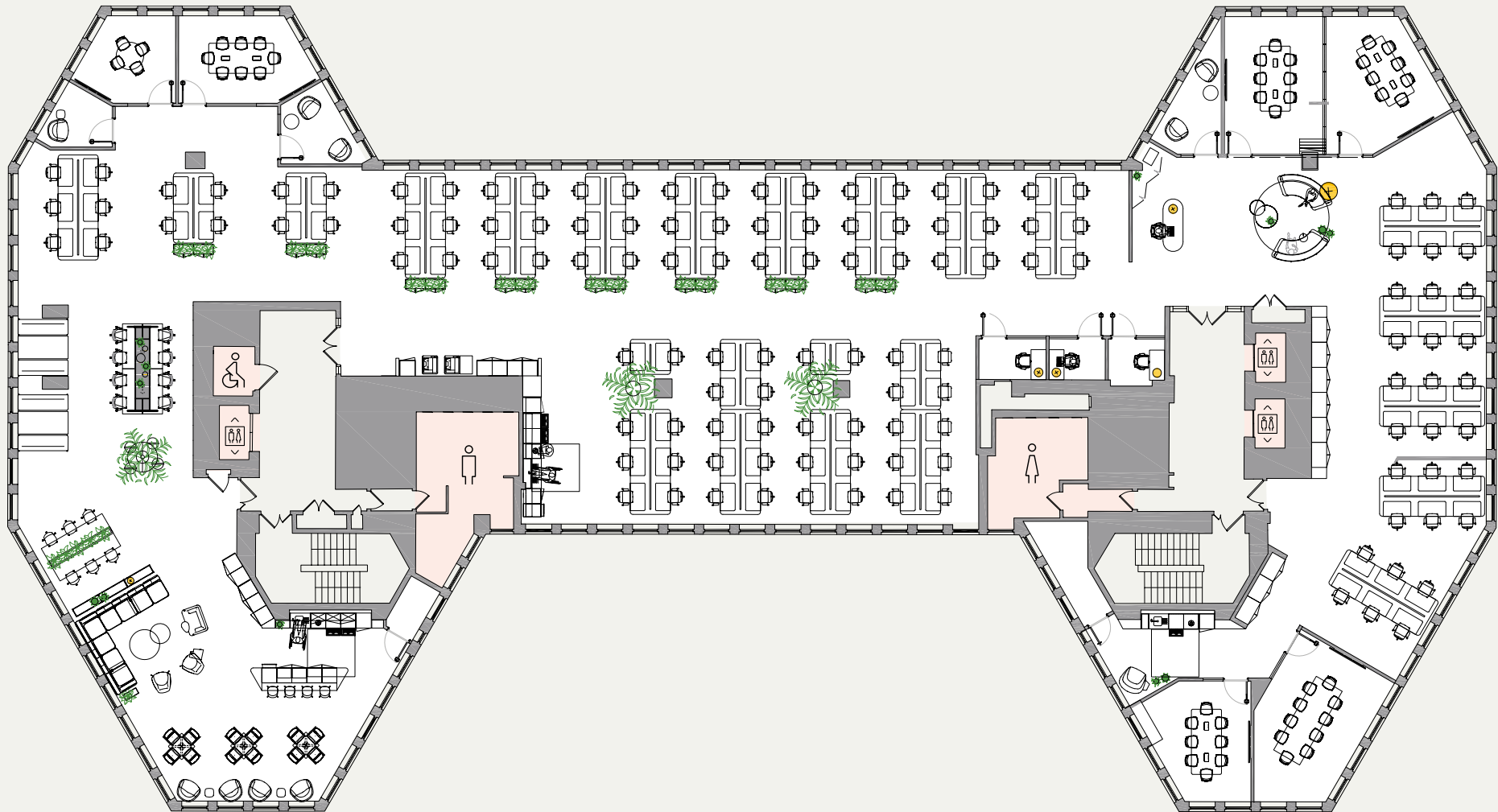


**57 desks**  
**50 hot desks**  
**7 Meeting rooms**



# High density

## SPACE PLAN



**128 desks**  
**14 hot desks**  
**6 Meeting rooms**

Tailor your perfect  
workspace  
at 55 King Street











WELCOME TO KING STREET

THE ORBIT SUITE

WIRELESS BILLBOARD

- 1. COMPLETELY WIRELESS - NO CABLES
- 2. NO NEED FOR A LAMP - NO PLUGS TO BE PULLED
- 3. NO NEED FOR A LAMP - NO PLUGS TO BE PULLED
- 4. NO NEED FOR A LAMP - NO PLUGS TO BE PULLED

Orbit SUITE

BOOKABLE MEETING ROOM



## MODERNISATION

# Top-to-bottom renewal of a distinctive building

Having shaped the streetscape of King Street for over 50 years, the retention and modernisation of this distinctive building delivers sustainable workspace to inspire and empower the next generation.

55 King Street stands prominently in the heart of Manchester's Central Business District, anchoring the city's core for over 50 years. Today, this historic building is being revitalised to meet modern standards, offering decarbonised workspace for the next generation. Equipped with energy-efficient, all-electric HVAC systems and LED lighting throughout, the building maximises its use of 100% renewable electricity.

The exposed concrete structure, combined with full-height glazing, provides a dynamic and intriguing workspace with stunning views of Manchester's architectural heritage, both new and old.



# ALL BAR ONE

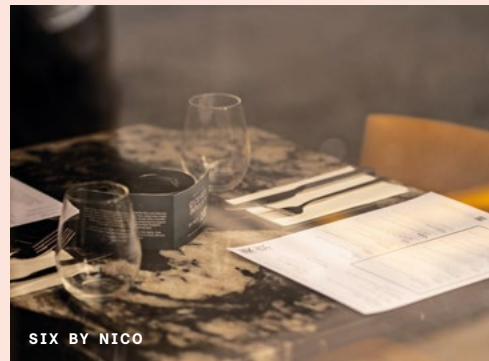
- ▶ KALA
- ▶ FRANCO MANCA
- ▶ SIX BY NICO
- ▶ GAIL'S BAKERY
- ▶ MAKI & RAMEN
- ▶ BLANK STREET
- ▶ CAFÉ BEERMOTH
- ▶ 10 TIB LANE
- ▶ SAM'S CHOP HOUSE
- ▶ CORBIÈRES
- ▶ EL GATO NEGRO
- ▶ HOUSE OF FU
- ▶ ALBERT SCHLOSS
- ▶ IMPOSSIBLE



GAIL'S BAKERY



BLANK STREET COFFEE



SIX BY NICO

Manchester offers diverse dining, entertainment, cultural attractions, green spaces, and vibrant nightlife, making it an exciting place to be.




CAFÉ BEERMOTH





KALA







 **PICCADILLY**

 **PICCADILLY GARDENS**


 **MARKET STREET**

 **ST. PETERS SQ**


**DEANSGATE-CASTLEFIELD**


 **DEANSGATE**

 **55 KING ST**

 **SALFORD CENTRAL**

 **EXCHANGE SQUARE**

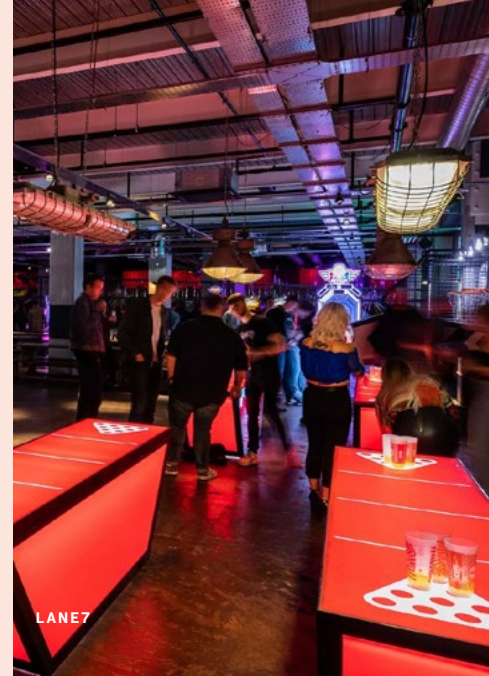
 **SHUDEHILL INTERCHANGE**

 **VICTORIA**

**M2  
4LQ**



- BLACK CAT CLUB
- BREAKOUT MCR
- ALCOTRAZ
- MCR ART GALLERY
- WHISTLE PUNKS
- ▶ CHALLENGE POINT
- CRYSTAL MAZE
- JUNK YARD GOLF
- NQ64
- ▶ FLIGHT CLUB
- POINT BLANK
- ROXY BALL ROOM
- ESCAPE HUNT
- ▶ LANE7 BOWLING
- ▶ CHAOS KARTS



Offering exceptional opportunities for immersive experiences and team building activities, all conveniently located, in and around Manchester city centre, ensures your team can fully enjoy and benefit from everything the city has to offer.









# 55 KING STREET

MANCHESTER, M2 4LQ  
what3words: gallons.dozen.vibe

55kingstreet.co.uk

53.4813°N  
2.2436°W

## FOR ENQUIRIES



**Harry Skinner**  
harry.skinner@cushwake.com  
07775 711 136

**Joe Parker**  
joe.parker@cushwake.com  
07717 356 582

**Edwards.**

**Oliver Woodall**  
owoodall@edwardsprop.com  
0161 833 9991

**Ed Keany**  
ekeany@edwardsprop.com  
07734 229 202

**OBi**

**Andrew Cowell**  
acowell@obiproperty.co.uk  
07584 990 976

**Richard Lace**  
rlace@obiproperty.co.uk  
07795 104 231

## A DEVELOPMENT BY

**Orbit**

**Adam Jackson**  
adam.jackson@emerson.co.uk  
07764 502 708

**DISCLAIMER:** These Particulars are believed to be correct at time of going to Press, but the Developer reserves the right to change the scheme in the future. However, the Vendors/Lessors and Agents of this property give notice that: **(1)** These Particulars are intended as a general outline only, for the guidance of prospective purchasers or tenants, and do not constitute the whole or any part of an offer or contract. **(2)** They cannot guarantee the accuracy of any description, dimension or other details contained in these Particulars and prospective purchasers or tenants should not rely on them as statements of fact or representation, but must satisfy themselves as to the accuracy of such details. **(3)** No employee of the Agents has any authority to make or give any representation or warranty, or enter into any contract whatsoever in relation to the property. **(4)** Prices and rents quoted in these Particulars may be subject to VAT in addition. (0225)