

BRIDGEWATER  
HOUSE

# BRIDGEWATER HOUSE, MANCHESTER

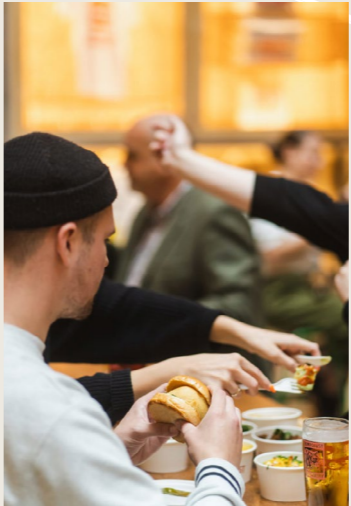
PART 2ND AND PART 8TH FLOORS  
5,283 SQ FT AND 6,054 SQ FT



# BRIDGEWATER HOUSE; A NATURAL BLEND OF MATERIALS ELEGANTLY FUSING THE THEN AND NOW



The Palace Theatre, 1939



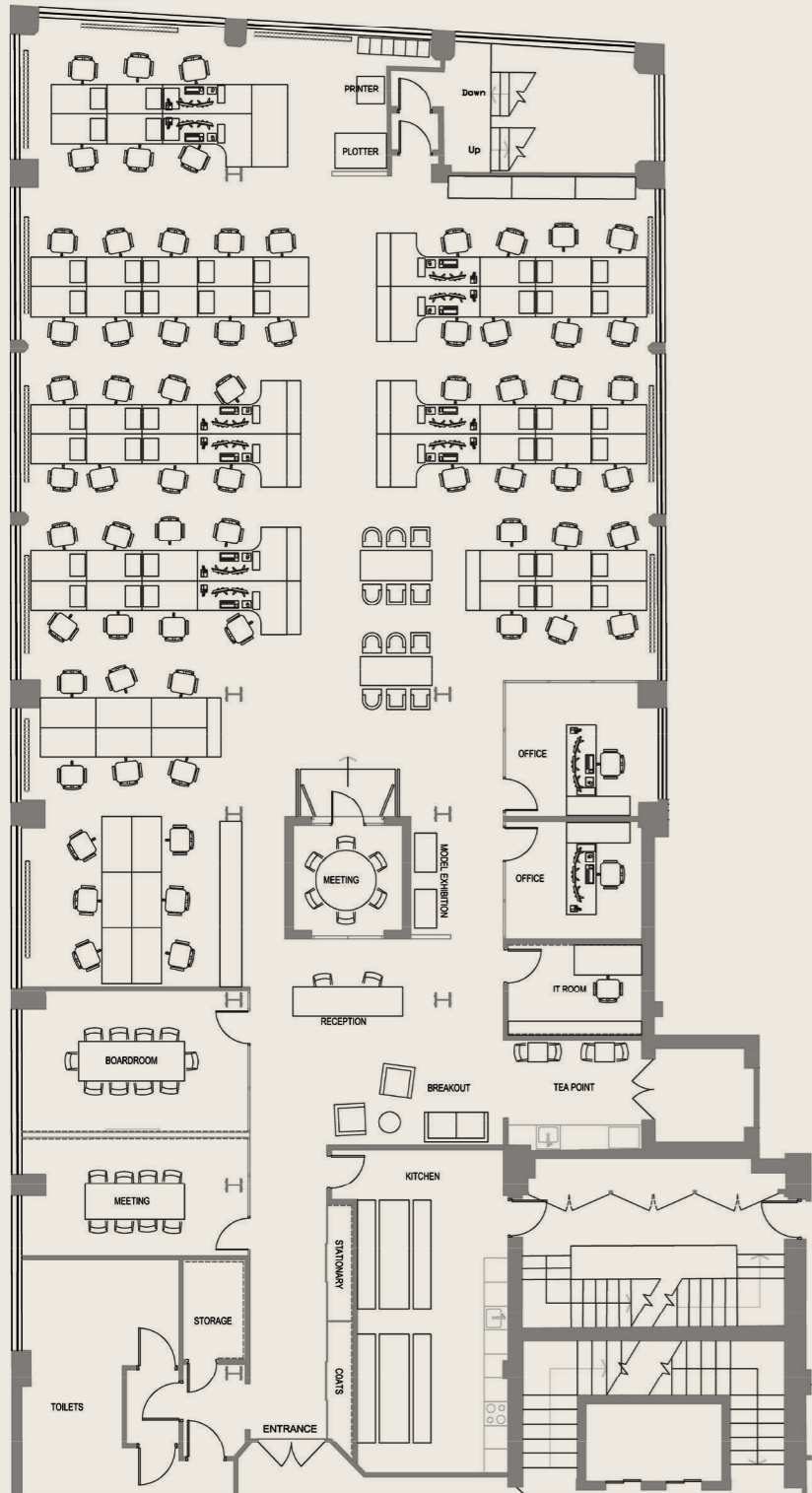
”  
MANCHESTER  
HUMS WITH AN  
ENERGY AND  
VIBRANCY LIKE  
NO OTHER.

- Grade II listed
- Exposed character features
- On site business lounge and cafe
- Shower/changing facilities
- Secure bike storage
- Basement gym
- DDA compliant
- 24 hour access

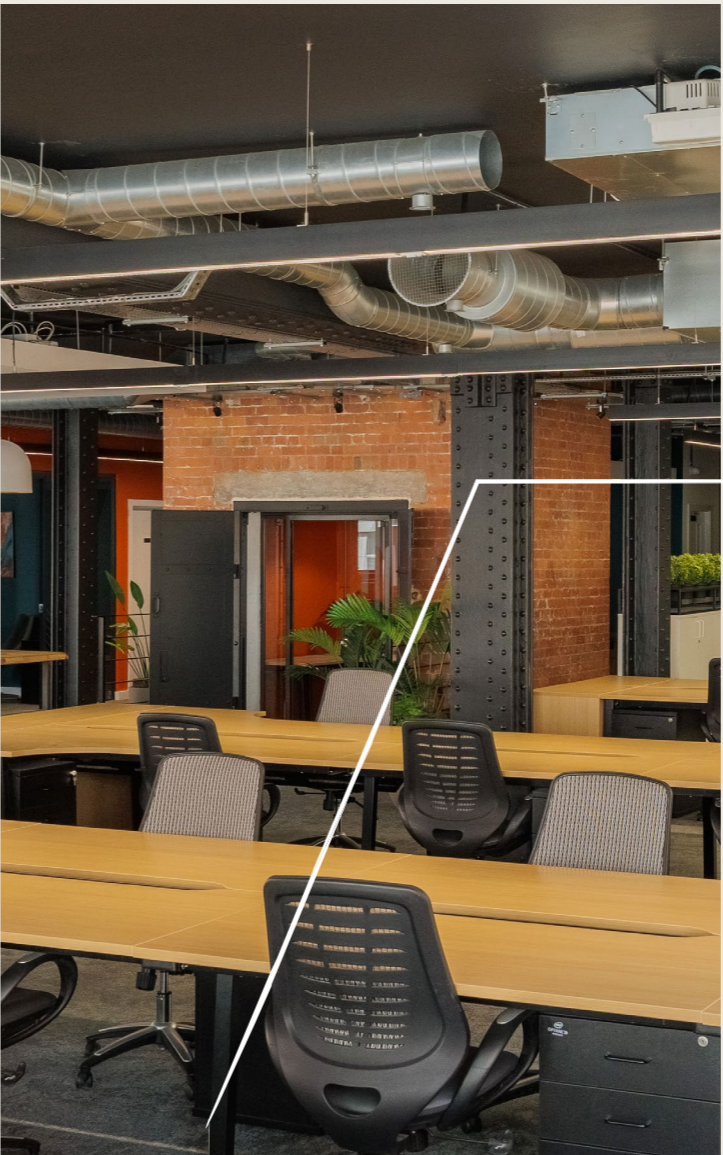
Just two minutes’ stroll is Manchester’s Oxford Road station, putting you at the heart of the national rail network. St Peter’s Square, a key hub of city life and the city’s modernised Metrolink tram network is five minutes’ walk away.

# PART 2ND FLOOR

5,283 sq ft



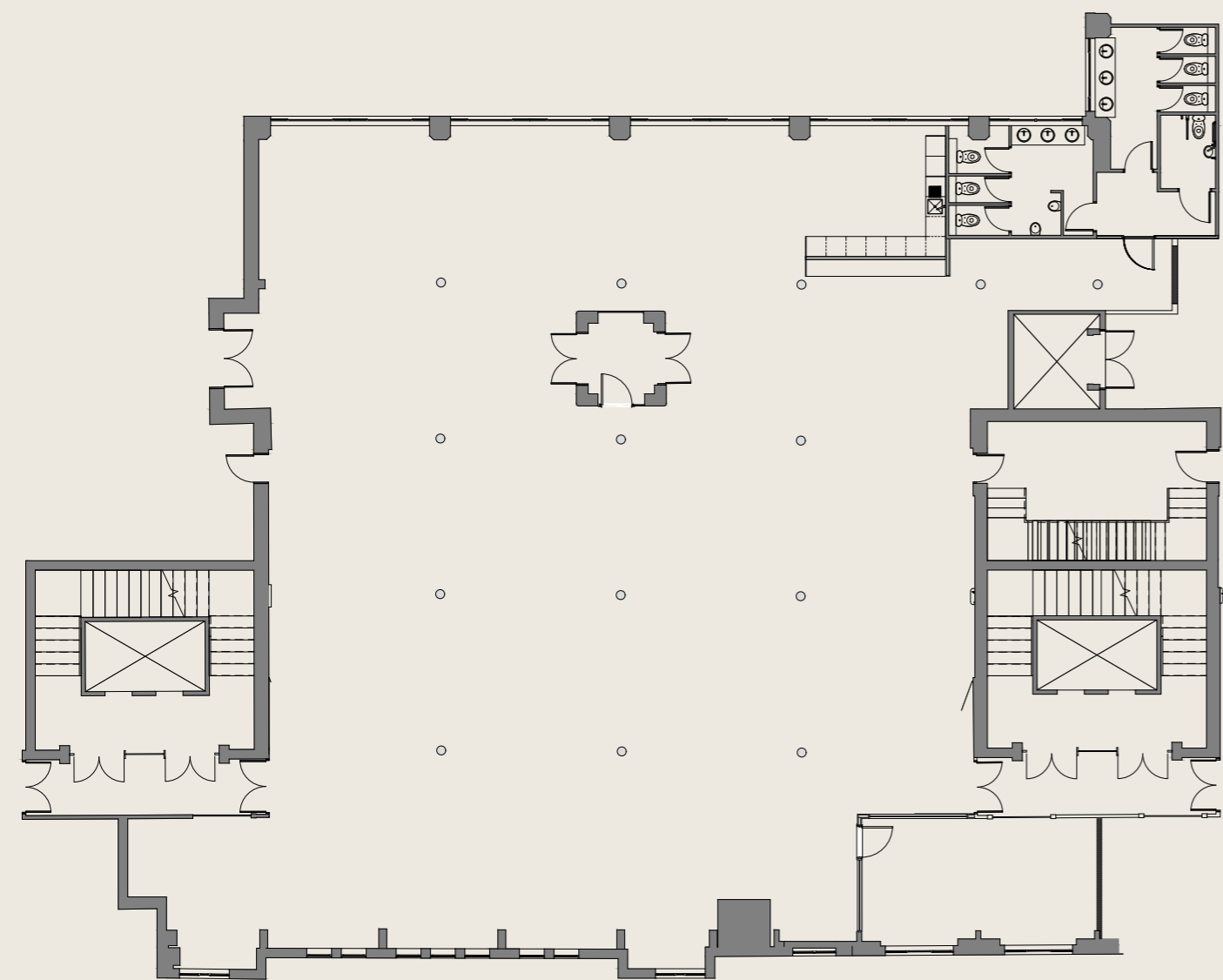
- Fitted and furnished office
- Pendant LED lighting
- Air conditioning
- 66 desks
- 10 person boardroom
- 8 person meeting room
- 2 private offices
- Comms room
- Reception/welcome area
- Large kitchen and separate tea point



”  
A COLLABORATIVE  
WORKSPACE FULL  
OF EXCITING NEW  
FEATURES.

# PART 8TH FLOOR

6,054 sq ft



”

LOOKING AFTER  
OUR OCCUPIERS  
WITH BEST IN  
CLASS FACILITIES.



Grade A specification

EPC A

Pendant LED lighting

VRF heating/cooling

Full access raised floors

10/12 person boardroom

4 person meeting room

Kitchen and breakout area

Can be available furnished



For enquiries contact

SAVILLS

Daniel Barnes  
dbarnes@savills.com

Richard Lowe  
rclowe@savills.com



EDWARDS

Andrew Timms  
atimms@edwardsprop.com

Oliver Woodall  
owoodall@edwardsprop.com



bridgewaterhouse.co.uk

MISREPRESENTATION ACT 1967. Savills and Edward & Co and for themselves and for the vendors or lessors of these properties whose agents they are, give notice that: i) The particulars are set out as a general outline only for the guidance of intending purchasers or lessees and do not constitute, nor constitute part of an offer or contract. ii) All descriptions, references to condition and necessary permission for use and occupation and other details are given in good faith and are believed to be correct, but any intending purchaser or tenant should not rely on them as statements or representations of fact but must satisfy themselves by inspection or otherwise as to the correctness of each of them. All dimensions and areas are approximate. iii) No person in the employment of has any authority to make or give any representation or warranty in relation to this property. FINANCE ACT 1989 Unless otherwise stated, all prices and rentals quoted are exclusive of Value Added Tax to which they may be subject. PROPERTY MISDESCRIPTION ACT 1991 These details are believed to be correct at the time of compilation, but may be subject to subsequent amendment. i-brochure designed and produced by Persona Tile Ltd. March 2023.

