



24 Oxford Court

MANCHESTER

High-Quality Self-Contained
Office Space To Let



Welcome to 24 Oxford Court

Welcome to Oxford Court. The building entrance fronts onto the private courtyard with a secondary entrance on to Chepstow street near to the crossroads with Portland Street and Oxford Street.

Situated close to key transport links including St Peter's Square and Oxford Road Train Station. There are an abundance of coffee shops, restaurants, hotels and bars on your doorstep.



Located in the heart of Manchester

Welcome.



Facilities



24/7
Access



Air-Conditioned
Offices



Showers



Raised
Access Floor



Secure
Courtyard



Monitored
Building CCTV



Parking available
as part of the
lease



Fast fibre
connection installed



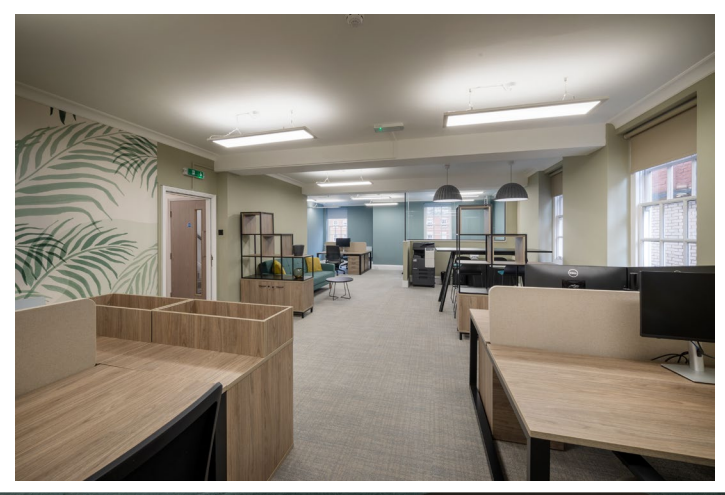
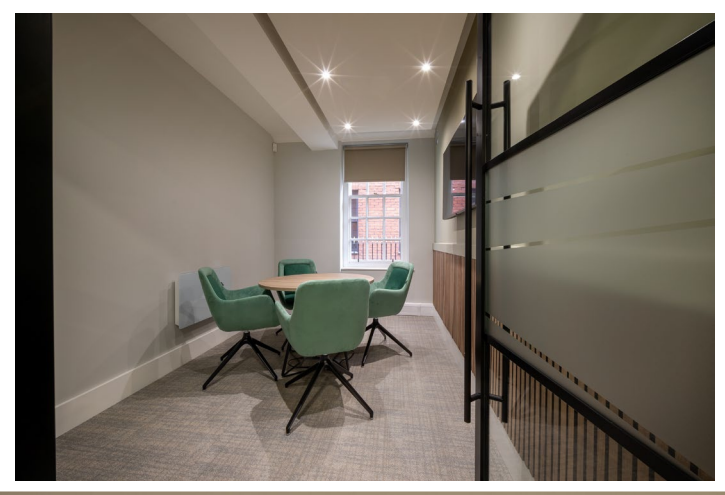
The Space

Suite	Sqft	SqM
Ground & First	1,972	183

Both ground and first floor are fully fitted and benefits from:

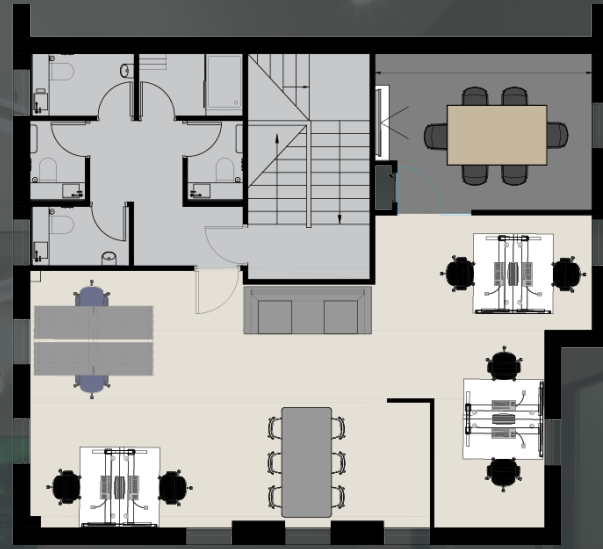
- Recently refurbished
- Fully furnished with AV, 50 inch screens & photocopier included.
- 1st floor furnished with 8 desks and co-working area but with potential to increase
- Self-contained with own front door entrance from the Oxford Court courtyard
- Parking available
- Excellent natural light
- Kitchen with fridge, microwave, dishwasher, Zip Tap & Brodericks's Mini Instant Coffee Machine
- LED Lighting
- Air Conditioning
- Shower room
- Two meeting rooms on ground floor
- One meeting room on first floor



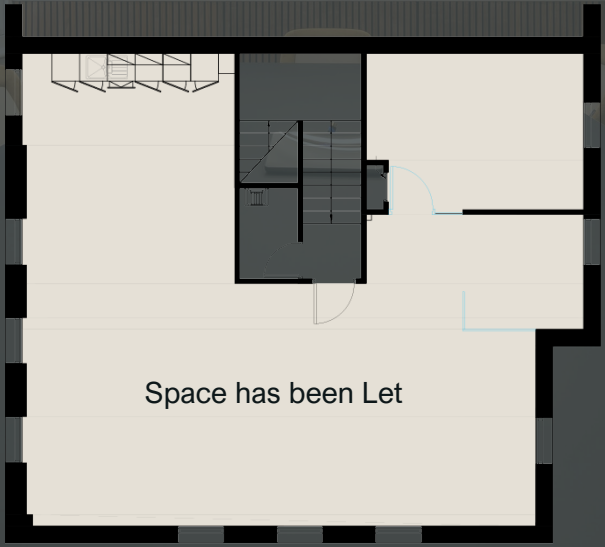




Ground Floor



First Floor



Second Floor



Hilton Hotel



Midland Hotel



Starbucks Coffee



Bridgewater Hall



Albert Schloss



Manchester Central

Lifestyle & Amenities

Work, Rest & Play...

Oxford Court is exceptionally well placed for bars, shops, restaurants and other lifestyle amenities including Starbucks, The Bridgewater Hall, Tesco, Palace Theatre, Hilton Hotel, Midland Hotel, Brew Dog and Albert Schloss.

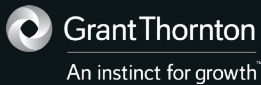
This area of Manchester has experienced a resurgence over the recent years due to the recent investment by Manchester City Council on improving the public buildings, the public realm and the transport infrastructure in and around St Peter's Square.

Meet the Neighbours

You'll be in great company...



THE ALCHEMIST



Location





All of Manchester City Centre's transport links are within walking distance of the buildings central location. Being located on Oxford St. means that employees benefit from the wide transport services connected to this strategically central point of town.



Oxford Court






Metro Stop

-  St Peters Square – 1 Min Walk
-  Manchester Piccadilly – 9 Min Walk
-  Manchester Victoria – 14 Min Walk
-  Manchester Oxford Road – 17 Min Walk



Train Station

-  Manchester Oxford Road – 6 Min Walk
-  Manchester Piccadilly – 16 Min Walk
-  Manchester Deansgate – 9 Min Walk



- | | | | | |
|--|---|--|--|--|
|  Albert's Schloss |  The Midland Hotel |  Pret A Manager |  Motel One |  Tesco |
|  Rudy's |  Wagamama |  Hilton Hotel |  San Carlo - Fumo |  McDonald's |



24 Oxford Court

Manchester | M2 3WQ

Lease Terms

Accommodation is available on a new full repairing and insuring lease for a term to be agreed.

Viewings

Viewing by appointment through the letting agent.

Contact

Dan Margolis

E: Dan.Margolis@colliers.com

M: 07394 573258

Sara Turner

E: Sara.turner@thebreeze.biz

M: 07720 464 364

Oliver Woodall

Email: owoodall@edwardsprop.com

M: 07741 634 874

