



FLEXIBLE WATERSIDE OFFICES TO LET

MEDIAVILLAGE

WATERFRONT QUAY, SALFORD QUAYS

[ENTER](#)

Surrounded by water on three sides Media Village on Waterfront Quay provides over 120,000 sq ft of commercial space in the centre of Salford Quays.

At the forefront of the regeneration of Salford Quays over the last 25 years, Media Village now offers a range of opportunities for occupiers seeking flexible and cost effective solutions to their occupational needs.

Existing occupiers include Guardian Media Group, Future Electronics and Computer Centre (UK).



**AT THE HEART
OF THE ACTION,
IN AND AROUND
MEDIA CITY**

MEDIA VILLAGE



Salford Quays comprises approximately 280 acres of former docklands which was comprehensively cleared in the early 80's to make way for one of the UK's most successful urban regeneration projects – Salford Quays.

Following the BBC's decision to relocate to MediaCityUK the whole of Salford Quays has been re-designated by Salford City Council as 'Media City'.

ITV and SIS have followed BBC into MediaCityUK which has created a media power house for the area and is acting as a catalyst for attracting further high profile occupiers.

SALFORD QUAYS AND MEDIA CITY HAVE NOW EFFECTIVELY MERGED TO PROVIDE ONE OF THE MOST DYNAMIC COMMERCIAL AND CREATIVE AREAS IN THE WHOLE OF THE UK



Built in the late 1980's / early 90's Waterfront Quay has been at the heart of the regeneration of Salford Quays and is set now to provide a more flexible low budget option for Salford Quays / Media City occupiers.

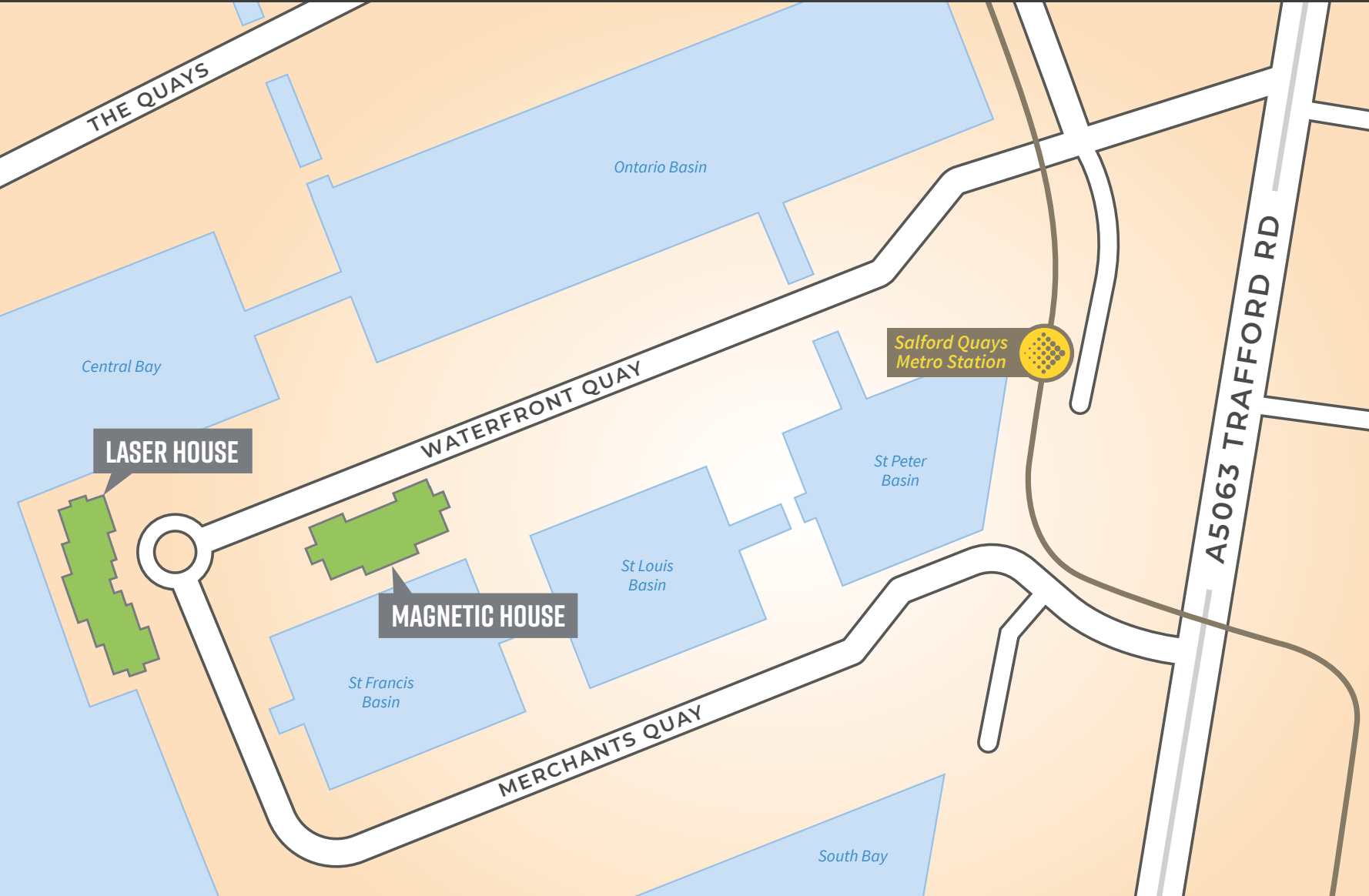
The accommodation is available in a range of suite sizes both fitted and unfitted.

There is plentiful car parking allocated to each building at a ratio of 1 space per 250 sq ft.



AVAILABLE FOR
FLEXIBLE SHORT
TERM LETTINGS

DESCRIPTION



MASTERPLAN



LASER HOUSE 11,468 SQ FT



MAGNETIC HOUSE 7,114 SQ FT

DESCRIPTION

Laser House occupies a prominent location at the end of Waterfront Quay with panoramic views across the Manchester Ship Canal.

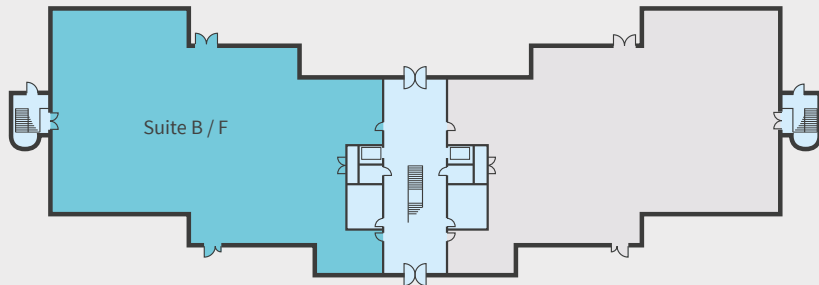
AVAILABLE ACCOMMODATION

Ground Floor	Suite B	5,719 sq ft
Second Floor	Suite F	5,749 sq ft
Total		11,468 sq ft

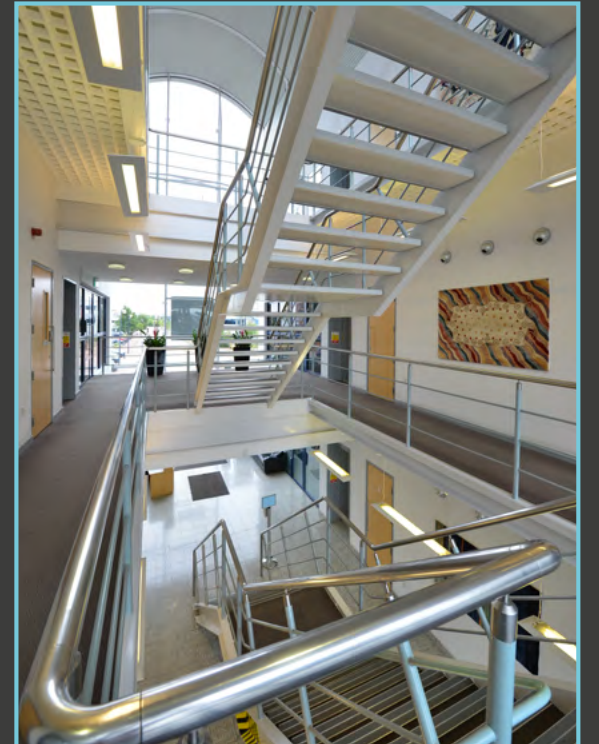
[GALLERY >](#)



TYPICAL FLOORPLAN



LASER HOUSE





MAGNETIC HOUSE

DESCRIPTION

Magnetic House was the last building to be built on Waterfront Quay and overlooks St Francis Basin.

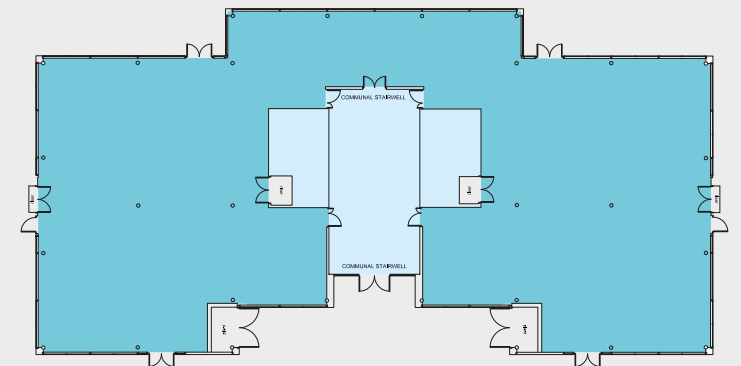
AVAILABLE ACCOMMODATION

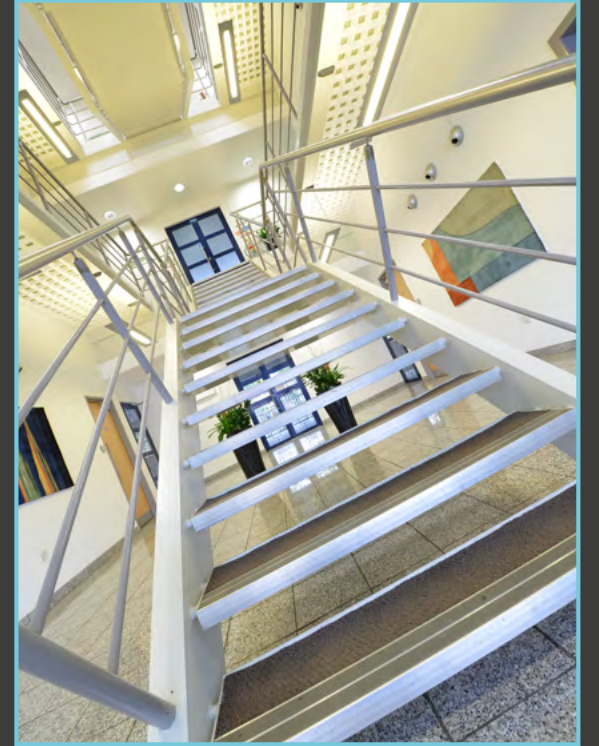
Ground Floor	7,114 sq ft
Total	7,114 sq ft

Accommodation can be sub-divided to provide a range of suite sizes from c. 1,046 sq ft upwards.

[GALLERY >](#)

GROUND FLOORPLAN





WATERFRONT QUAY IS LOCATED AT THE HEART OF SALFORD QUAYS / MEDIA CITY

Media Village is easily accessible by car and by public transport. The scheme is also within easy walking distance of a wide range of leisure and retail amenities.

By road Media Village is located within half a mile of junction 3 of the M602 motorway and 1.5 miles from Manchester city centre.

By public transport, Salford Quays Metrolink station is located between Waterfront Quay and Trafford Road and provides direct links every 6 minutes to Manchester city centre, MediaCityUK and other parts of the expanding Metrolink network.

LOCATION



A HOST OF AMENITIES ON THE DOORSTEP

A wide range of hotels (budget – 4 star); restaurants; coffee shops; convenience stores; supermarkets; leisure and fitness clubs; cinemas, theatres, and a museum watersports centre are all within walking distance. You can even enjoy open water swimming and Dragon Boat racing in the summer months!

If you want more, the Trafford Centre and Manchester city centre are only a short distance away.

For sports fans, Manchester United FC, Lancashire Cricket Club in Old Trafford add further prestige to the area.



AMENITIES

RESTAURANTS



HOTELS



SHOPPING & LEISURE





EPC

Energy Performance Certificates are available on request.

VIEWING

For further information or an appointment to view please contact either of the joint letting agents.

26 KING STREET MANCHESTER M2 6AY

Edwards & Co

0161 833 9991

www.edwardsandco.com

Ed Keany

CANNING

O'NEILL

canningoneill.com

0161 244 5500

Mark Canning

Important Notice: Edwards & Co and Canning O'Neill for themselves and for the vendors or lessors of this property whose agents they are give notice that: (i) these particulars do not form any part of any offer or contract (ii) the statements contained herein are issued without responsibility on part of this firm, its employees or its clients and are statements of opinion and therefore are not to be taken as or implying a statement or representation of fact (iii) any intending purchaser or lessee must satisfy themselves as to the correctness of each of the statements made herein (iv) the vendors or lessors of this property do not make or give, and neither the firm nor any of its employees have any authority to make or give, any representation or warranty whatever in relation to this property (v) all rents and prices quoted are exclusive of VAT unless stated otherwise. Any intending purchasers or lessees must satisfy themselves independently as to the incidence of VAT in any transactions. Terms quoted are subject to contract. September 2018. Designed and produced by Creativeworld Tel: 01282 858200.



CONTACT