

59,000 SQ. FT OFFICE HQ

Scotscroft

Arriving in Manchester Q2 2025

TOWERS
Manchester



Scotscroft

SCOTSCROFT IS A BEST IN CLASS
SUSTAINABLE HQ OFFICE, SET
IN MANCHESTER'S MOST
UNIQUE PARKLAND CAMPUS.

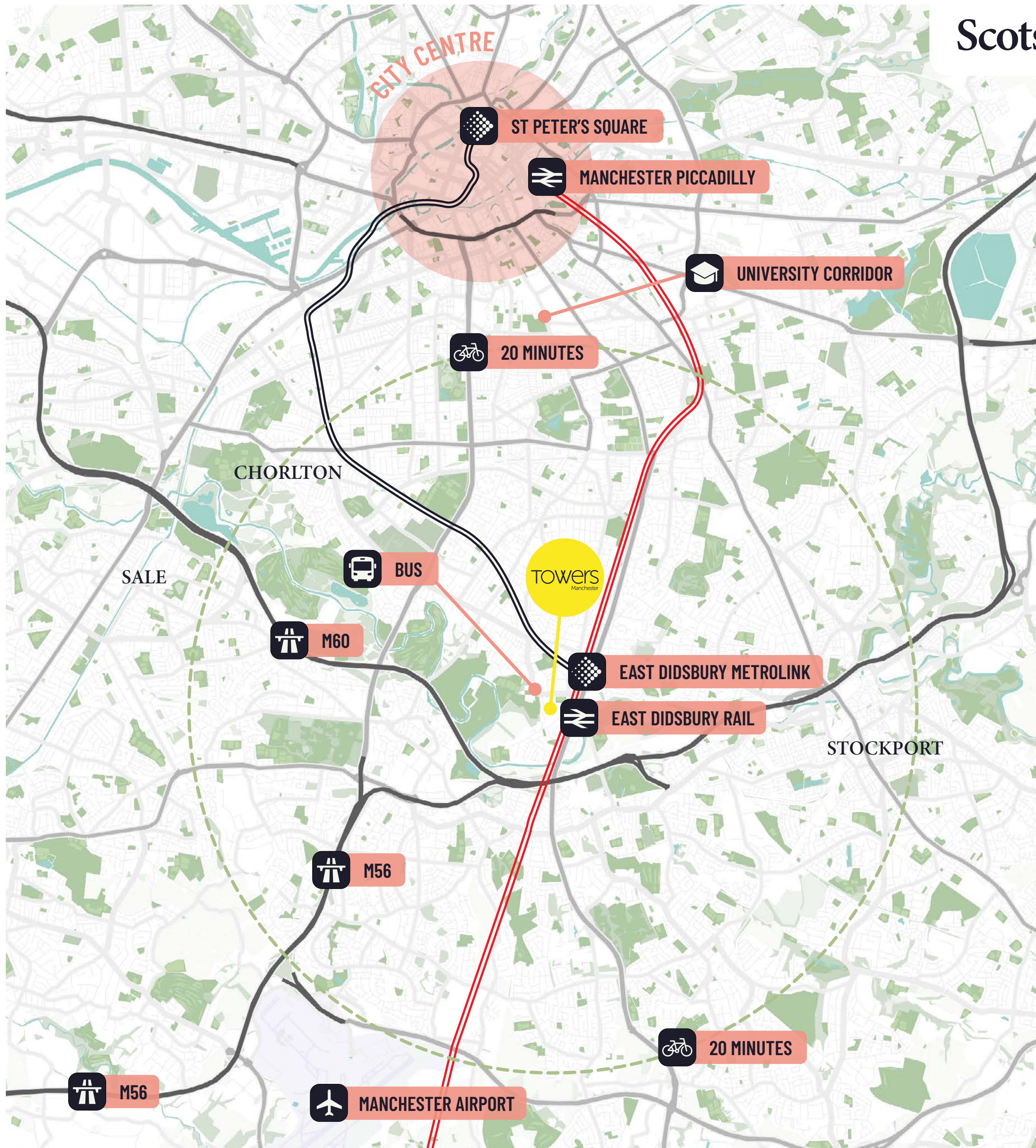
THE LOCATION



I WANT AN OFFICE



THAT'S EASY TO GET TO



Transport Links

GET IN THE WAY YOU LIKE

TRANSPORT LINKS



EAST DIDSBURY METROLINK
8 MINUTES WALK



BUS
5 MINUTES WALK



EAST DIDSBURY RAIL
7 MINUTES WALK



ON SITE CYCLE HUB
AND SHOWERS



M56 (J1)
5 MINUTES DRIVE



MANCHESTER AIRPORT
10 MINUTES DRIVE



M60 (J1)
10 MINUTES DRIVE



AMPLE ON SITE PARKING
WITH EV CHARGING



MANCHESTER CITY CENTRE
6 MILES AWAY



20 MINUTES



“DIDSBURY IS THE MOST SOUGHT-AFTER NEIGHBOURHOOD IN THE UK.”

Data from Rightmove 2021



Scotscroft



Local area

WHAT'S NEARBY

-  CAFES & RESTAURANTS WITHIN EASY REACH
-  PARRS WOOD ENTERTAINMENT CENTRE 8 MINUTES WALK
-  BOTANICAL GARDENS 4 MINUTES WALK
-  DIDSBURY VILLAGE 5 MINUTES WALK



COMMUNITY



I WANT AN OFFICE



**THAT'S MORE THAN
JUST A WORKPLACE**



"THE BEST PLACE I'VE WORKED"



Scotscroft

"EVERYTHING'S PERFECT"



"I LOVE THE VIBRANCY OF TOWERS"



Towers Community A THRIVING CULTURE

Quotes from anonymous tenant satisfaction survey Q4 2024

Work-Life Balance
**ENABLING A
VIBRANT COMMUNITY**



**A RANGE OF BENEFITS ENDORSED
BY OUR OCCUPIERS.**

93% CUSTOMER
SATISFACTION
SCORE

+75 NET
PROMOTER
SCORE
(VS BENCHMARK +30)



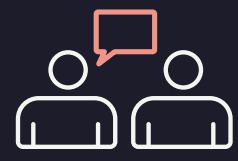
DEDICATED
TENANT APP



EXPANSIVE WELLBEING
AND FITNESS CLASSES



ANNUAL EVENT
PROGRAMME



SOCIAL EVENTS



ONSITE BEEHIVES
AND HONEY



GREEN PARKLAND
CAMPUS



BEAN ON SITE
COFFEE SHOP



WEEKLY WELLNESS
CLASSES



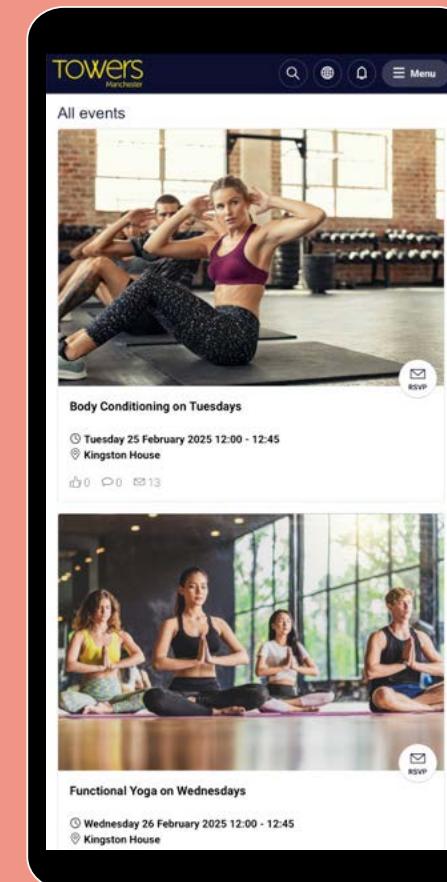
FOOD POP-UPS



RETAIL AND
LEISURE DISCOUNTS



DEDICATED ON
SITE TEAM



Find your next activity
through the Towers Life
portal and App.

76 EVENTS HELD IN 2024

Scotscroft

HOME TO 23 COMPANIES & OVER 2,200 EMPLOYEES ACROSS 10 BUILDINGS.

Towers' neighbours
YOU'RE IN GOOD COMPANY

BRITISH AIRWAYS

spiritmedical
supplying for life

conferma
pay

Honeywell

CISCO

syngenta

BARRATT

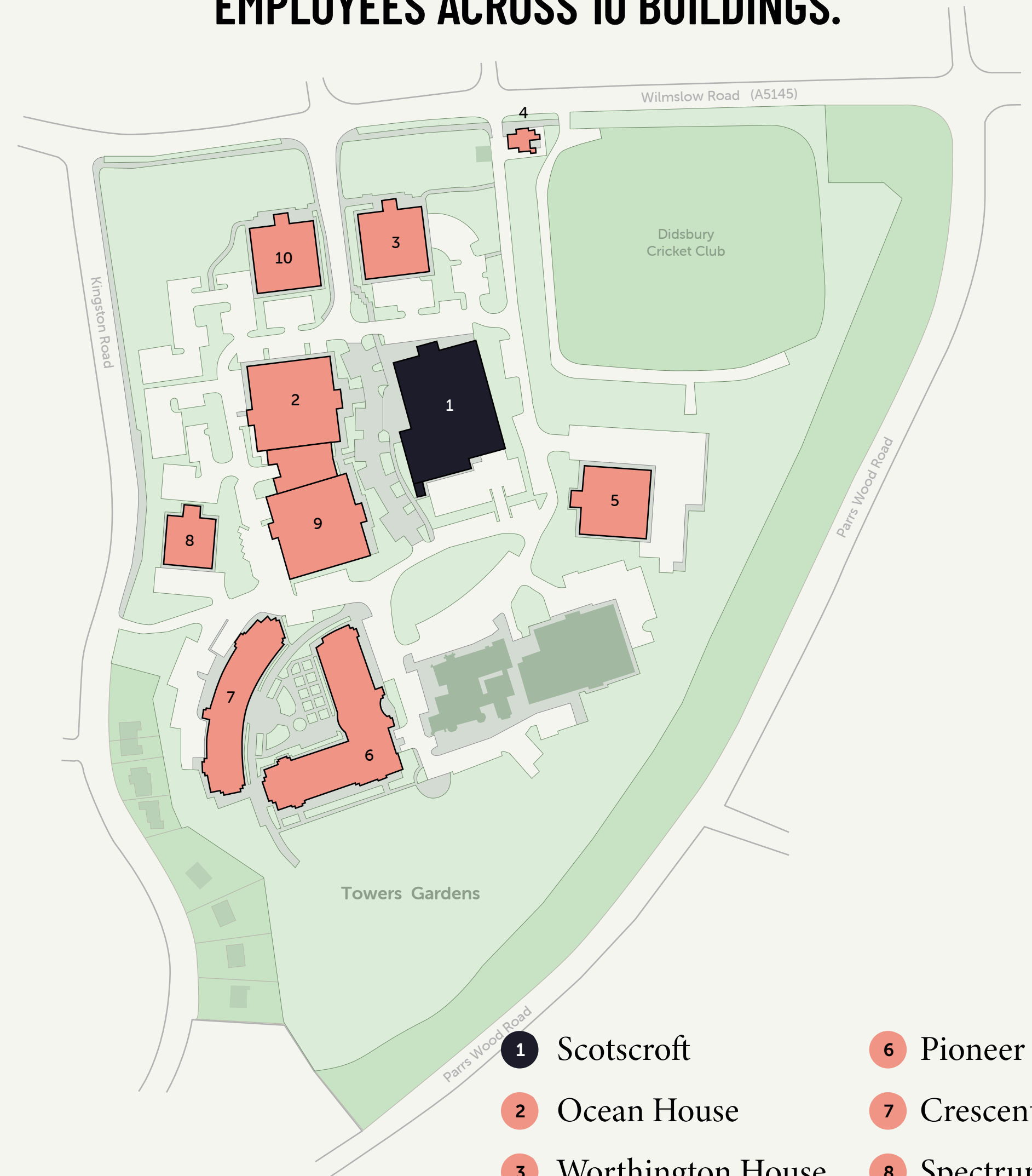
essity

Regus

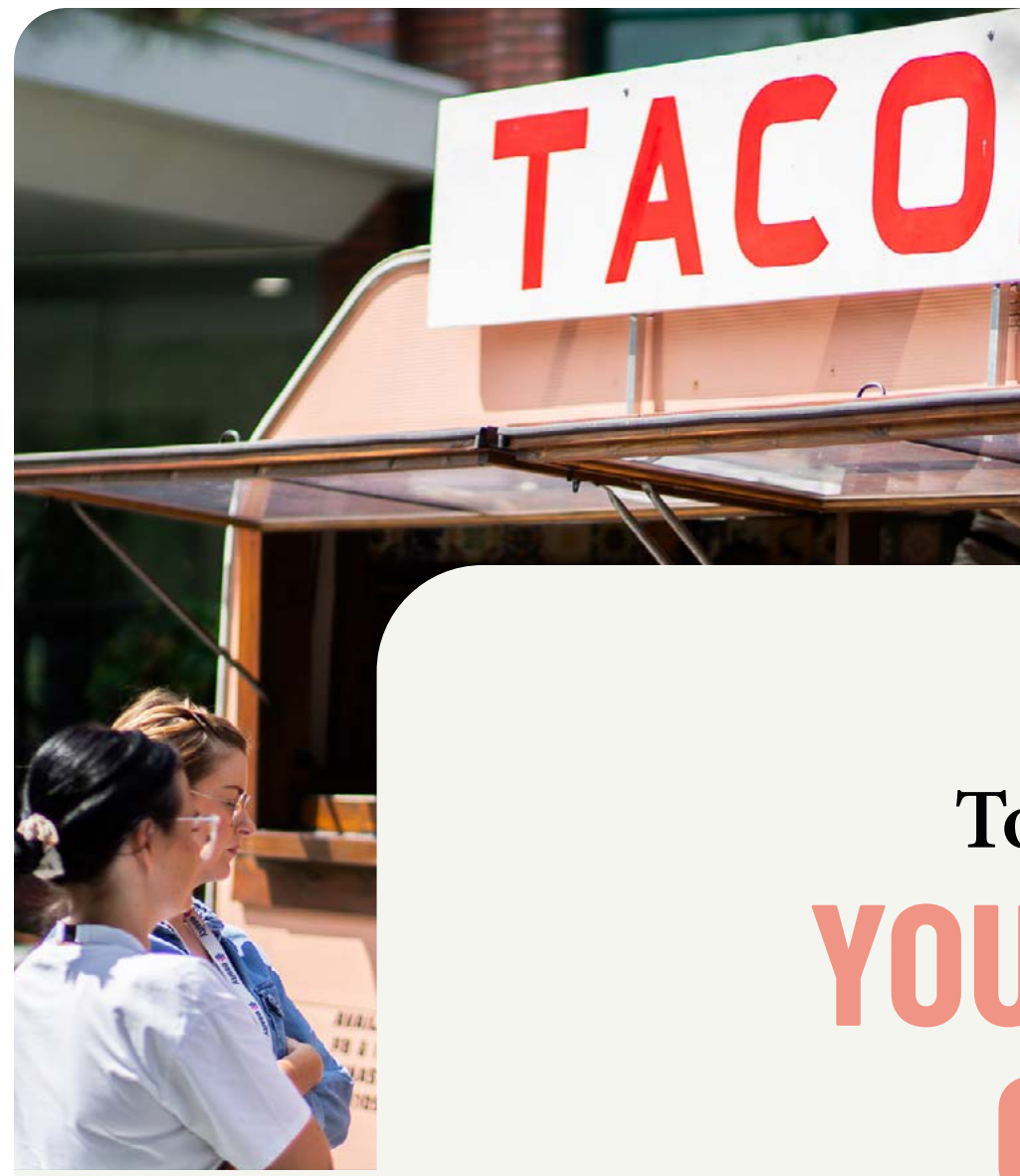
Greenergy

St Pierre
Groupe

bean COFFEE
ROASTERS



- 1 Scotscroft
- 2 Ocean House
- 3 Worthington House
- 4 The Lodge
- 5 Pavilion
- 6 Pioneer House
- 7 Crescent House
- 8 Spectrum
- 9 Adamson House
- 10 Kingston House



ESG

I WANT AN OFFICE

**THAT'S KIND TO
THE ENVIRONMENT**



NET ZERO CARBON

ALIGNED WITH



TARGET ENERGY CONSUMPTION

71%
LOWER THAN A
TYPICAL OFFICE

51%
LOWER THAN A BEST
PRACTICE OFFICE

Note: energy and carbon consumption has been modelled using industry best practices and the CIBSE TM 54 standards. Typical occupier requirements were used in the calculations. Actual results may vary based on occupiers uses and working times. Benchmark data used is the 2024 Deepki index for European office energy use..

CLEAN & GREEN

SCOTSCROFT IS BEING REIMAGINED WITH ESG AT THE FOREFRONT.



NABERS TARGETING 5.5*

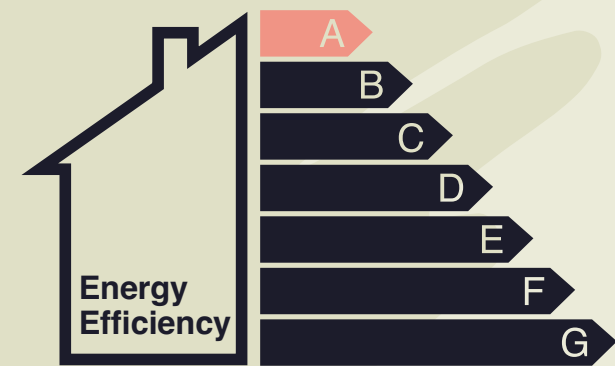
One of only 4 buildings in Manchester targeting 5.5*+

Supporting Net Zero Carbon targets for the building



BREEAM EXCELLENT

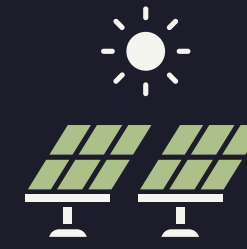
Endorsing the design, procurement and sustainability credentials of the refurbishment



EPC A15

Targeting market leading Energy Performance Certificate

ENVIRONMENTAL SOCIAL GOVERNANCE



ON-SITE PV CELLS FOR 30% OF ENERGY DEMAND



ZERO WASTE-TO-LAND-FILL POLICY



ENERGY USE: 75 KWH PER M2



RETENTION OF EXISTING BUILDING & FRAME



FULL SUB-METERING FOR ENERGY OPTIMIZATION



ALL-ELECTRIC SERVICES, 100% REGO-BACKED RENEWABLE ENERGY



PARTNERING WITH FRANCIS HOUSE



LOCAL & DIVERSE ON-SITE STAFF



SUPPORTIVE OF LOCAL INDEPENDENT TRADERS



ACTIVE SCORE GOLD



FITWELL 3*



ANTI-SLAVERY POLICY

SPECIFICATION



I WANT AN OFFICE



WITH A GRADE A SPECIFICATION

Building Specification
**DESIGNED FOR
EFFICIENCY & BALANCE**



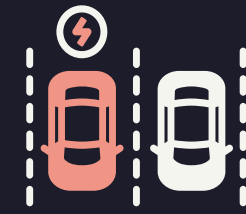
OCCUPANCY RATIO 1
PERSON PER 10M2



VRF AIR CONDITIONING +
FRESH AIR VENTILATION



38 CYCLE SPACES



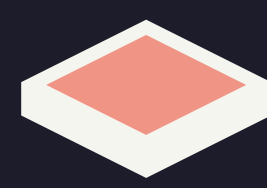
ON SITE PARKING & EV
CHARGING POINTS



2 PASSENGER
LIFTS



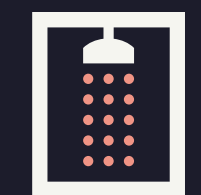
3M FLOOR TO
CEILING HEIGHT



RAISED ACCESS
FLOORS



DEDICATED
RECEPTION



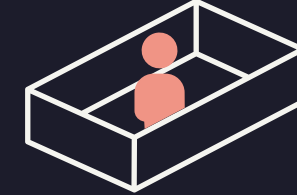
4 NEW SHOWERS



NEW LED
LIGHTING



HIGH LEVELS OF
NATURAL LIGHT



PRIVATE
TERRACE



Scotscroft

SCOTSCROFT

RECEPTION



Scotscroft

VRF/VRV AIR CONDITIONING

LED LIGHTING

3M FLOOR TO CEILING HEIGHT

EFFICIENT FLOOR PLATE

HIGH LEVELS OF NATURAL LIGHT

RAISED ACCESS FLOOR

YOUR NEW SPECIFICATION

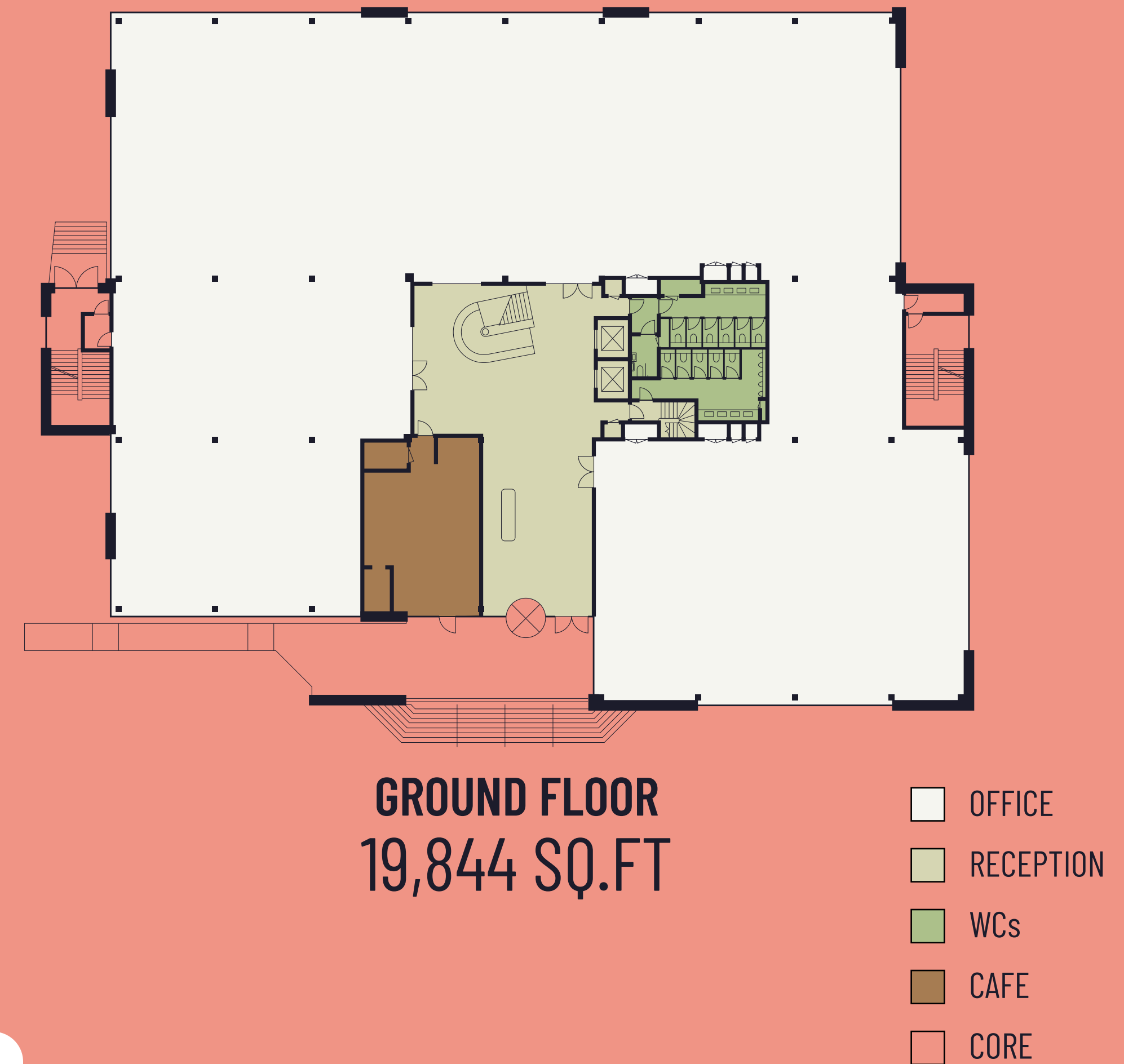
Scotscroft

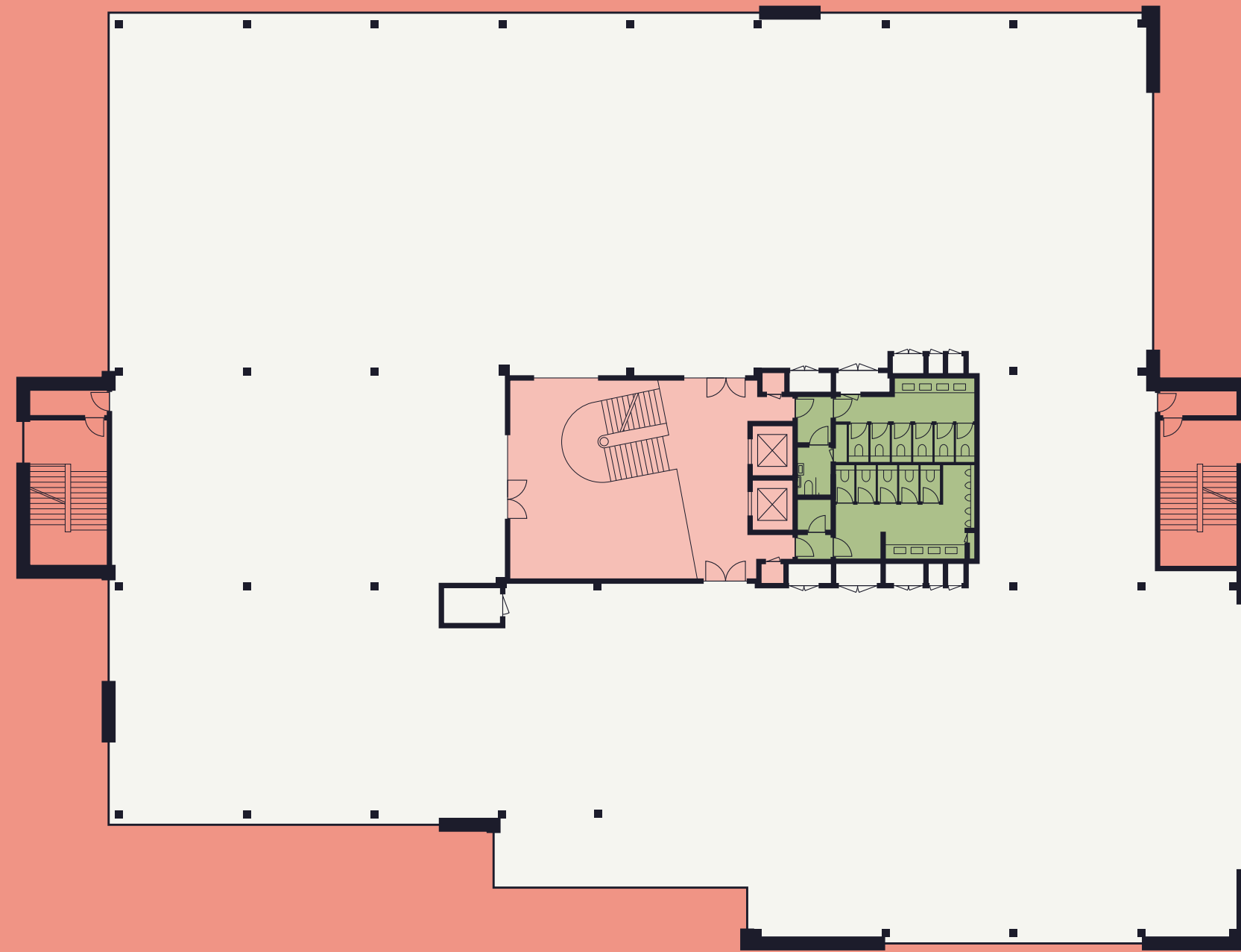


SPACE TO MAKE YOUR OWN

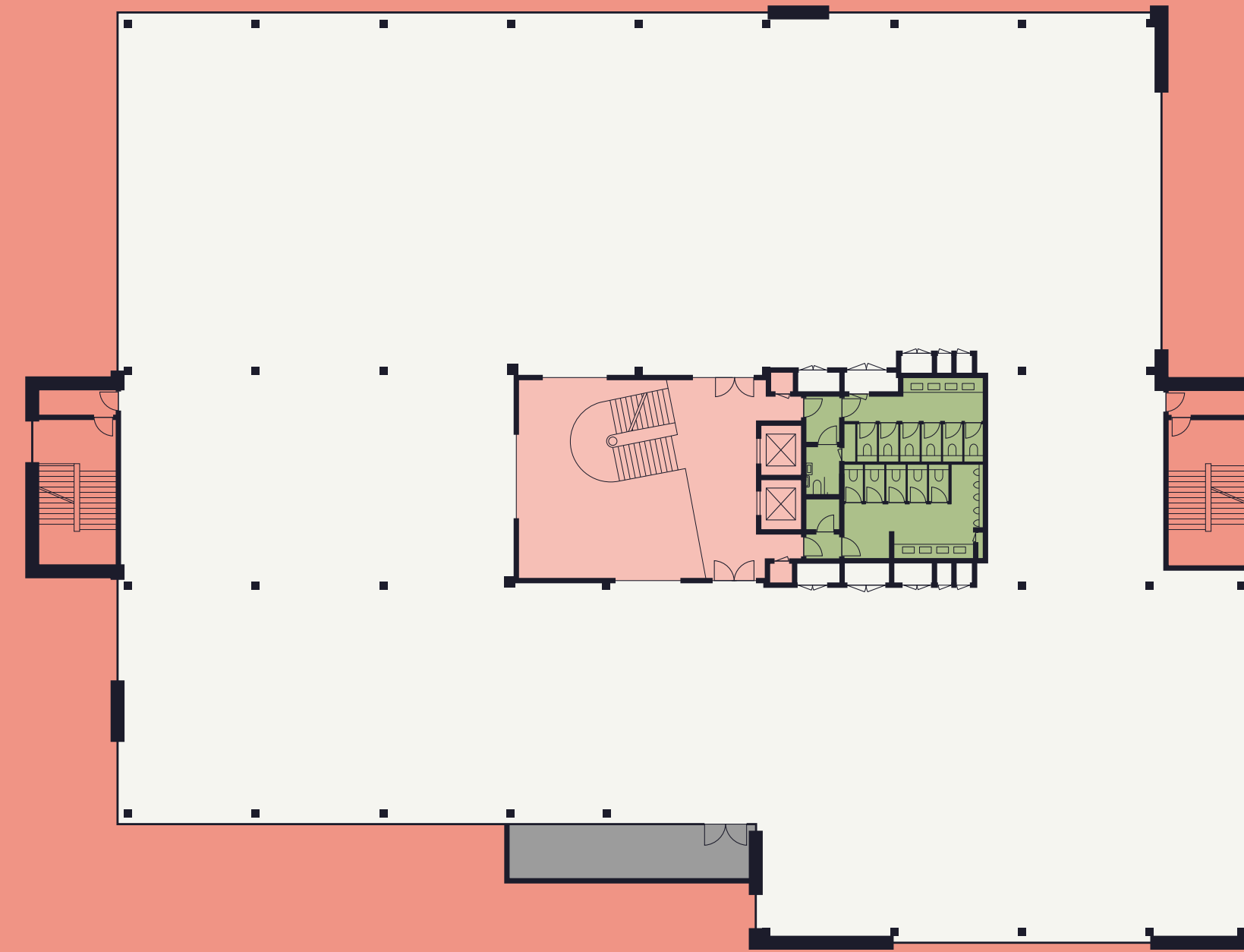
Schedule of Areas
**OFFICE SPACE THAT
 FITS YOUR NEED**

Floor	Sq.Ft	Sq.M
BASEMENT	1,108 SQ.FT	103 SQ.M
GROUND	19,844 SQ.FT	1,844 SQ.M
FIRST	19,354 SQ.FT	1,798 SQ.M
SECOND	18,992 SQ.FT	1,765 SQ.M
TOTAL	59,298 SQ.FT	5,509 SQ.M





FIRST FLOOR
19,354 SQ.FT



SECOND FLOOR
WITH PRIVATE TERRACE
18,992 SQ.FT

- OFFICE
- WCs
- PRIVATE TERRACE
- CORE
- ATRIUM

FLOOR PLANS

TOWERS
Manchester

Scotscroft

GET IN TOUCH
GET THE OFFICE YOU WANT

Edwards.

0161 833 9991

RICHARD DINSDALE
rdinsdale@edwardsprop.com
07801 294770

Colliers

0161 831 3300

DOMINIC POZZONI
dominic.pozzoni@colliers.com
07836 564818

CBRE

0161 455 7666

MARK GARNER
mark.garner@cbre.com
07799 625236

VISIT US AT
Scotscroft.co.uk

A DEVELOPMENT BY
KENNEDY WILSON

Misrepresentation act 1967: Edwards & Co, Colliers and CBRE, for themselves and for the lessor(s) of this property whose agents they are, give notice that: 1. These particulars do not constitute any part of, an offer or contract. 2. None of the statements contained in these particulars are to be relied on as statements or representations of fact. 3. Any intending lessee must satisfy himself by inspection or otherwise as the correctness of each of the statements contained in these particulars. 4. The lessor(s) do not make or give and neither Edwards & Co, nor Colliers nor CBRE, nor any person in their employment has any authority to make or give, any representation or warranty whatever in relation to this property. Finance Act 1989: Unless otherwise stated all prices and rents are quoted exclusive of VAT Property Misdescription Act 1991: These details are believed to be correct at the time of compilation but may be subject to subsequent amendment. March 2025. Designed by Smart Soho